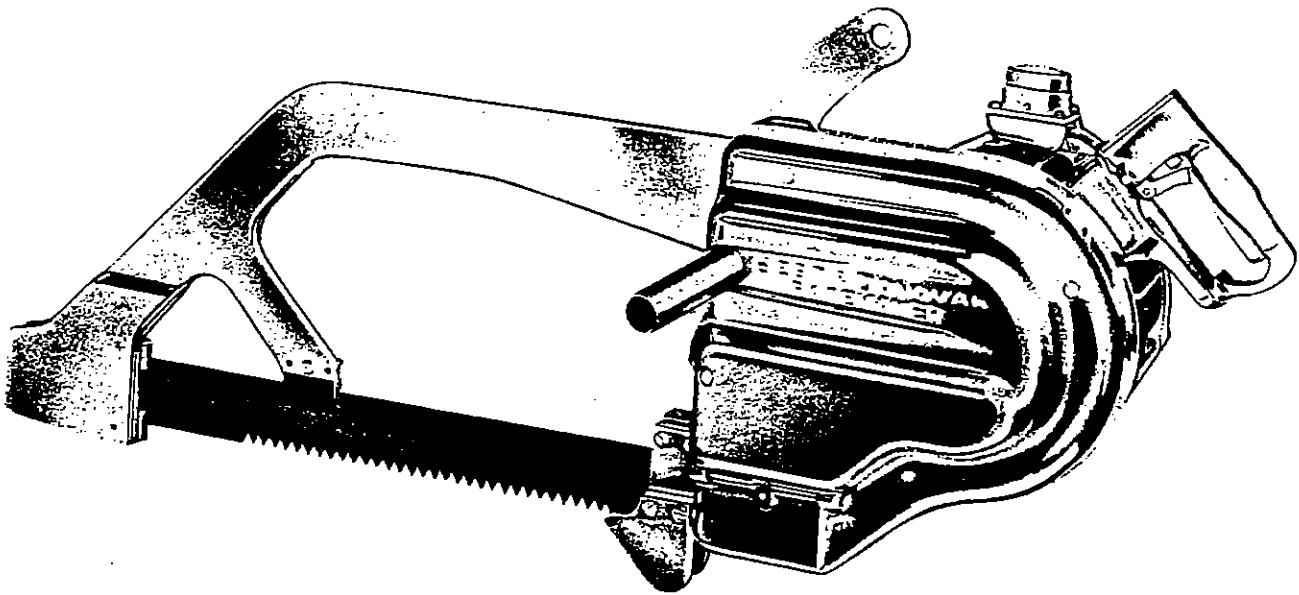


PARTS – INSTALLATION – MAINTENANCE

3 hp

'PACEMAKER'

RUMPBONE SAW & CARCASS SPLITTER



WARNING

ALWAYS EXERCISE CARE WHEN OPERATING OR PERFORMING MAINTENANCE, REPAIRS AND ADJUSTMENTS. Always disconnect the electrical connector before attempting to work on this tool. Be sure all electrical tools are properly grounded.



BEST & DONOVAN
5570 Creek Road, Cincinnati, OH 45242, USA

TOLL FREE: 1-800-553-2378
TELEPHONE: (513) 791-9180

CABLE: WEPCO
FAX: 513-791-0925

PREVENTATIVE MAINTENANCE INSTRUCTIONS

for

B & D'S 'PACEMAKER' RUMPBONE SAW & CARCASS SPLITTER — 3 HP

LUBRICATION

The 'Pacemaker' is easily maintained by three (3) pressure grease fittings, two (2) of which are located on the No. 6230060 saw driving arm and one (1) on the No. 6214000 support bracket. These fittings are accessible thru No. 6261600 flip door located on No. 6260000 cover.

These pressure fittings should be lubricated at least twice per day during an eight hour shift, as they supply lubrication to the two bearings in the driving mechanism and to the 6217693 needle bearing. Use a good grade bearing grease in the 2102900 grease gun furnished, with your machine.

6026093 bearing is packed with a specified grease to prolong its life. When this bearing needs replacement you should either order it from B&D or repack a standard bearing with our grease — 6026093 provided in one quart containers.

SAW BLADE

Two saw blades are available for the 'Pacemaker' Beef Carcass Splitter:

- (1) No. 6100000 Type "SS" 2 tpi 32" length 2-11/16" width
- (2) No. 6100100 Type 'A' 4 tpi 32" length 2-11/16" width

The saw blade is removed by removing No. 6231000 saw pin after unclipping No. 6230500 retaining spring and then sliding the blade toward the rear of the machine.

When replacing the saw blade it is recommended that the outer end of the blade be lubricated with a good grade oil before inserting in the 6082000 Outer Guides.

6091600 EXTENSION SAW GUIDE

The 6091600 Extension Saw Guide should be checked at regular intervals for proper clearance in relation to the saw blade. Excessive clearance will allow unnecessary vibration which will result in blade breakage or buckling, and also places severe strain on the driving mechanism parts.

Guides may be adjusted by closing the slot so the blade will not vibrate; however, be sure the blade slides freely in the slot after making the adjustment.

6075500 BUSHING LINERS

NYLON bushing liners are recommended for the 'Pacemaker' saw blades. After inserting new bushing liners, be certain they slide freely on the 6231000 saw bolt.

It is recommended that new bushing liners be installed each time your blades require sharpening.

Should the bushing liner fit snug on the 6231000 saw bolt, take the 6099800 reamer (supplied with your machine) and ream the nylon bushing liner thus allowing it to slide freely on the saw bolt.

If the bushing liner fits tight on the saw bolt, and is placed into operation, it will cause jamming and as a result severely damage your machine.

6082000 OUTER SAW GUIDES

The 6082000 Outer Saw Guides should be inspected at regular intervals. They should be sprayed-off with hot water (or steam) at least twice per day during an eight (8) hour shift. This will prevent the guides from becoming caked with blood and gunk, which, as a result, will prevent them from pivoting freely with the rocker action of your saw blade and as a result will cause severe damage to your machine.

The slots of the outer guides should be checked regularly for proper clearance in relation to the saw blade. If the guides become worn and permit the blades to SLAP in the slots, then these parts are in need of replacement.

DRIVING MECHANISM

For best service and operation on the 'Pacemaker', it is recommended that after forty (40) hours operation, or once each week, whichever may arrive first, the 6260000 cover be removed to better clean and check the internal parts.

6260000 COVER

To remove the cover, the following steps should be followed:

- (1) remove the 6052559 line wire complete
- (2) remove the four No.'s 9901334 and 9901339 socket head screws
- (3) remove cover

6230060 SAW DRIVE ARM

Saw Drive Arm should be free to oscillate with very little side movement. No. 9901759 nut should be tight. No. 6231000 saw pin should be a tight fit, with no slack.

6035060 DRIVING ARM STUD

Driving Arm Stud should be rigid. No. 9901172 screws should be tight.

6225500 CONNECTING ROD

Connecting Rod should have no side movement. No. 9901758 nut and two (2) No. 9901178 screws should be tight.

6214000 SUPPORT BRACKET

Support Bracket should be rigid. No. 9901372 screw and No. 9901178 screw should be tight. No. 6215060 Grease Tube Assembly should be in place.

6220500 CRANK - 6220600 COUNTERWEIGHT

On Crank and Counterweight Assembly, No.'s 9901189 and No. 9901303 Screws should be tight.
To remove the cover, the following steps should be followed:

REMOVAL OF DRIVER MECHANISM PARTS

To remove No. 6214000 Support Bracket:

- (a) Loosen 9901178 Clamping Screw
- (b) Remove two (2) No. 9901372 Screws
- (c) Use the cover screw 9900339 as a puller in the center hole of the bracket to push it away from the main frame, ease two arms up at the same time, so they won't bind.

To remove No. 6220600 Counterweight:

- (a) Remove three (3) No. 9901303 Screws
- (b) Loosen No. 9901189 Screw on Counterweight
- (c) Then use a standard wheel puller to remove counterweight.

To remove No. 6230060 Saw Driving Arm, No. 6225500 Connecting Rod, No. 6220500 Crank and Connected Parts:

- (a) Remove No. 9901759 Lock Nut and No. 6238100 Washer
- (b) Loosen No. 9901189 Screw on Crank
- (c) Then use a standard wheel puller to remove crank, connecting rod and saw driving arm.

Caution: Do not lose or damage spacer in No. 6232000 Bearing.

To remove No. 6230060 Saw Drive Arm:

- (a) Remove No. 9901758 Nut
- (b) Loosen two (2) No. 9901178 Screws
- (c) Remove No. 6228000 Bearing Bolt

Caution: Do not lose or damage spacer in No. 6228493 Bearing or No. 6228600 Bearing Seal.

To remove No. 6225500 Connecting Rod:

- (a) Drive out three (3) No. 9902070 Dowel Pin
- (b) If No. 6026093 Ball Bearing is to be replaced press out No. 6220800 Crank Journal. If Crank Journal is loose in ball bearing, replace both bearing and journal.

No. 6228493 and No. 6232000 Bearings

These individual bearings are matched at the factory to give correct fit and must be used as a set. The "C" Ring in the No. 6230060 Saw Drive Arm can be substituted (i.e. left in arm) if it is within .002" in thickness of "C" Ring in new bearing. Pack with grease.

To remove No. 6000000 Motor:

- (a) Remove three (3) No. 9901308 Bolts and remove No. 6006500 Fan Cover
- (b) Loosen No. 9901893 Fan Set Screw and remove No. 6006500 Fan
- (c) Remove No. 6000793 Plug, one (1) 9901314 and Three (3) No. 9901318 Bolts and remove No. 6000000 Motor Housing and Stator.
- (d) Grip No. 6009000 Rotor in a vice and remove No. 6013093 Bearing Lock Nut. A special wrench is available from factory. Then remove rotor.

6295000 HANGER

The 6295000 Hanger can be removed by tapping out the No. 6096000 Hanger Stud snap ring assy from the motor side.

6011593 FRONT MOTOR BEARING

The 6011593 Bearing may be removed by taking out the four (4) 9901149 Screws and the 6012000 Lock Ring. Tap the bearing from the stator side.

6035060 DRIVING ARM STUD

To remove, first unscrew the three (3) 9901172 screws and second, tap out stud from stator side of main frame.

ALL BALL BEARINGS THAT NEED REPLACEMENT, SHOULD BE REPLACED WITH THE SAME TYPE BEARINGS USING PROPER BEARING MOUNTING TOOLS (available from factory) AND CARE SHOULD BE TAKEN SO NOT TO DAMAGE BEARINGS. BE SURE ALL BEARINGS HAVE PROPER FIT.

REASSEMBLY

To reassemble the 'Pacemaker', reverse removal procedures. Be sure all parts are clean. Note Following:

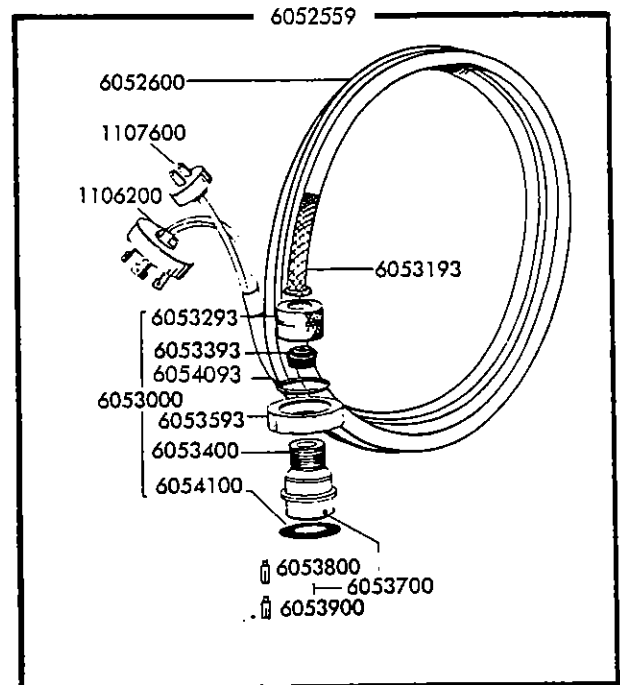
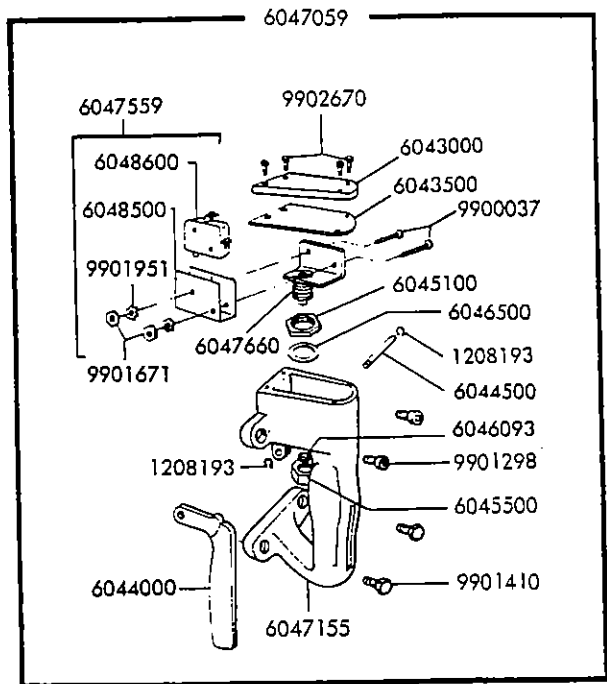
- (a) No. 6096000 Hanger Stud is a tight fit and is inserted in Main Frame from crank side.
- (b) Be certain to replace the No. 6004093 Spring at the rear of the No. 6003593 Motor Bearing. Leave fan cover off until drive mechanism is installed.
- (c) After replacing No. 6228000 Bearing Bolt (from short leg side of connecting rod) tighten one (1) 9901178 screw so that No. 9901758 Nut can be tightened, then loosen screw. Be sure not to loose small spacer in No. 6228493 Bearing.
- (d) Position No. 6220500 Crank on rotor shaft so that $3\frac{1}{4}$ " Dia face is approximately $\frac{7}{16}$ " above face of main frame. A thin wedge in saw slot will help in positioning. Remove wedge and tighten No. 9901189 screw.
- (e) Replace No. 6230060 Saw Drive Arm and No. 6225500 Connecting Rod with No. 6026093 Bearing and No. 6220800 Journal installed being careful not to lose small spacer in No. 6232000 bearing. Replace No. 6238100 washer and tighten No. 9901759.
- (f) Replace No. 6220600 Counterweight using thin wedge, pull counterweight up to journal and crank with (3) No. 9901303 screws. Remove wedge and tighten No. 9901189 screw. If a new No. 6220800 journal or No. 6220500 crank is used the three $\frac{5}{16}$ " dia holes will need to be drilled for the three (3) No. 9902070 Dowel Pins.
- (g) Rotate crank with fan to be sure mechanism is free. Move end of connecting rod in or out as required, then tighten two (2) No. 9901178 screws in connecting rod.
- (h) Replace No. 6214000 support bracket, be sure there is clearance between it and counterweight, tighten two (2) No. 9901372 screws.

B&D PACEMAKER RUMPBONE SAW & CARCASS SPLITTER

Part #	No. Req.	Description	Part #	No. Req.	Description
1057093	1	Bearing *-1	6052559	1	Line Wire - Complete
1106200	1	4-Wire Male Coupling - Twist Lock	6052600	12'	Tirex 6 - Wire Cord
1107600	1	2-Wire Male Coupling - Straight	6053000	1	6 - Wire Female
**1117693	1	Remote Control - 110 V			Coupling Assy with 6053193
**1117793	1	Remote Control - 220 V	6053193	1	Strain Relief
**1117893	1	Remote Control - 440 V	6053293	1	Nut to secure 6053193
**1117993	1	Remote Control - 550 V	6053393	1	Rubber Grommet
**1118093	1	Coil - 110 V	6053400	1	6 - Wire Plug Shell
**1118193	1	Coil - 220 V	**6053401		Screw with Insulator
**1118293	1	Coil - 440 V	6053593	1	Large Nut for 6053000
**1118393	1	Coil - 550 V			
1208193	2	Retaining Ring *-2	6053700	1	6 - Wire Female Pin Assy. *-1
**2102900	1	Grease Gun	6053800	5	Female Post - Plain
**2108000	1	Grease Gun Nozzle	6053900	1	Female Post - With Lug
60000xx	1	Motor Case & Stator S.A. (Specify voltage, phase, cycle)	6054093	1	Wire Clip
6001000	1	Motor Housing	6054100	1	Gasket
60015xx	1	Stator only (Specify voltage, phase, cycle)	**6056200		42 Volt Cable Cplg.
6003593	1	Rear Motor Bearing *-1	6075500	1	Saw Bushing Liner
6004093	1	Loading Spring	6080550	1	Saw Yoke Assy (All parts bolted to yoke)
6005000	1	Fan *-1	6080560	1	Saw Yoke (Includes Heli-coils & Spreader)
6005593	1	Fan Key	6081500	1	End Spreader
**6005793	1	Ret. Ring	6082000	2	Outer Saw Guide *-2
6006500	1	Fan Cover	6082500	2	Wear Plate - Outer *-2
6009000	1	Rotor	6083000	2	Saw Guide Bolt *-2
6011593	1	Front Motor Bearing *-1	6086000	1	Rear Saw Guide Spacer
6012000	1	Lock Ring (For 6011593)	6086500	2	Rear Saw Guide *-2
6013093	1	Bearing Locknut *-1	6086570		Shim - Rear Saw Guide
6018000	1	Inner Race *-1	6086600		Shim .005
6021000	1	Key	**6086700		Shim .010
6026093	1	Ball Bearing (For 6225500) *-2	6087000	1	Filler Block - Tailholder
6026593	1	Retaining Ring	6088500	2	Tailholder
6035060	1	Driving Arm Stud S.A. *-2	6091600	1	Extension Saw Guide *-1
6036093	3	Grease Fitting *-3	6295000	1	Hanger
6039000	1	Handle Bracket	6096000	1	Hanger Stud & Snap Ring Assy
6040000	1	Gasket (Bracket to Motor)	6096193	1	Snap Ring - Hanger Stud
6041500	1	Gasket - Handle to Bracket	6098150	1	Side Handle Assy
6043000	1	Handle Cap	6098170	1	Stud
6043500	1	Gasket - Cap to Handle	6098198	1	Side Handle Only
6044000	1	Switch Trigger	**6099500	1	9/16 T Handle Wrench
6044500	1	Trigger Hinge Pin	**6099700	1	Saw Bushing Knocker
6045100	1	Switch Nut - Thin	**6099800	1	Saw Bushing Reamer
6045500	1	Switch Locknut	6100000	1	Saw Blade - S.A. "S.S." 2 Teeth per inch
6046093	1	Seal Ring - "O" Ring	6100100	1	Saw Blade - S.A. - "A" 4 Teeth per inch
6046500	1	Switch Nut Gasket	6210000	1	Main Frame
6047059	1	Rear Handle Complete Assy	6214000	1	Support Bracket (Stud & Rotor)
6047155		Rear Handle & Cap S.A. (6041000 - 6043000 - 9900339)	6215060	1	Grease Tube Assy
6047559	1	Switch Assy Complete *-1	6018293	1	Needle Bearing *-1
6047660	1	Switch Bracket S.A.	6220500	1	Crank
6048500	1	Insulator	6220600	1	Counterweight
6048600	1	Switch *-2	6220800	1	Crank Journal *-1
6050000	1	Plug Shell Base	6225500	1	Connecting Rod
6050001	2	Screw - To lock 6051500	6228000	1	Bearing Bolt
6050500	1	Gasket for Base	6228200	1	Sleeve
6051093	4	Mounting Screw	6228493	1	Bearing Complete (less 6228600) *-2
6051193	4	Lockwasher	6228600	2	Bearing Seal *-2
6051500	1	6-Post:Male Insert Cplg. Assy *-1	6230060	1	Saw Drive Arm S.A.
6051600	5	Male Post - Plain	6230500	1	Retaining Spring
6051700	1	Male Post - With Lug	6230793	1	Shoulder Screw

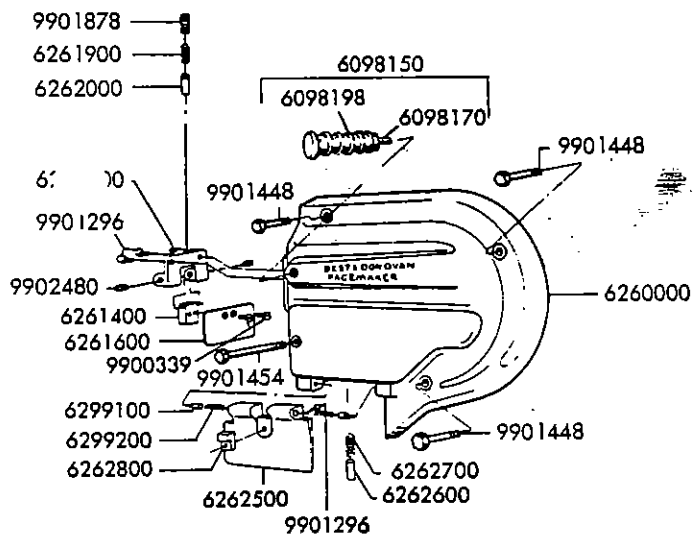
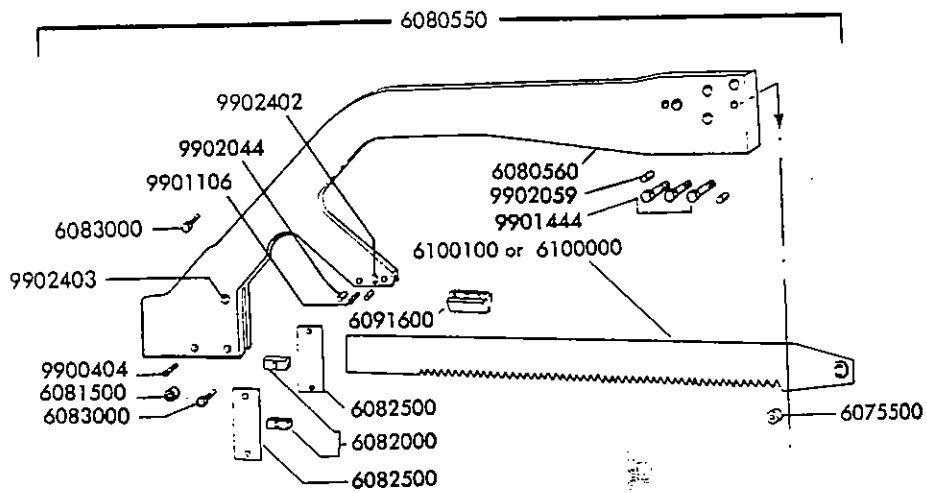
*-No. Denotes recommended spare part & number recommended.
 ** Listed but not illustrated.

Part #	No. Req.	Description
6230800	1	Spacer for 6230793
6231000	1	Saw Pin *-2
6232000	1	Bearing Complete (Less 6238100) *-2
6238100	1	Saw Stud Washer
6260000	1	Cover
6261200	1	Pivot Plate
6261400	1	Insert, Flip Door
6261600	1	Flip Door
6261900	1	Plunger
6262000	1	Rubber Spring
6262500	1	Saw Blade Door
6262600	1	Latch Pin
6262700	1	Latch Spring
6262800	1	Insert
6295000	1	Hanger
6299100	2	Hinge Pin
6299200	2	Spring
9900037	2	Screw
9900088	2	Plate Screw
9900339	2	Screw
9900404	1	Spreader Screw
**9900973	1	Screw for 6053700
9901106	1	Bolt
9901165	3	Socket Head Screw (to secure 6220500 & 6220600)
9901172	3	Anchor Screw
9901189	2	Clamping Screw (6220500 & 6220600)
9901296	3	Screw
9901298	2	Screw
9901304	4	Bracket Screw
9901314	1	Bolt (Motor to main frame)
9901318	3	Bolt (Motor to main frame)
9901372	2	Socket Head Screw (for 6214000)
9901410	2	Hex head screw
9901420	3	Fan Cover Bolt
9901444	3	Saw Yoke Bolt
9901448	3	Cover Bolt ((Hex head)
9901454	1	Cover Bolt (Hex head)
9901495	4	Screw - Tail Bone
9901497	3	Clamping screw
9901500	2	Bolt
9901671	2	Hex Nut
**9901752	4	Locknut for 9901495
9901758	1	Locknut for 6228000
9901759	1	Locknut
9901878	1	Screw - Plunger
9901893	1	Fan Set Screw
9901904	2	Set Screw (Stator to Motor Case)
**9901930	1	Washer for 6053700
9901935	3	Lock Washer
9901951	2	Washer
9902044	2	Dowel Pin
9902059	2	Dowel Pin
9902070	3	Dowel Pin
9902076	2	Roll Pin
9902402	1	Heli-coil for 9901106 *-1
9902403	2	Heli-coil for 6083000 *-2
9902456	1	Seal Plug
9902457	1	Pipe Plug
9902476	2	Stop nuts for 9901500
9902480	2	Cone Point Set Screw
9902670	4	Screw
9902762	4	Screw



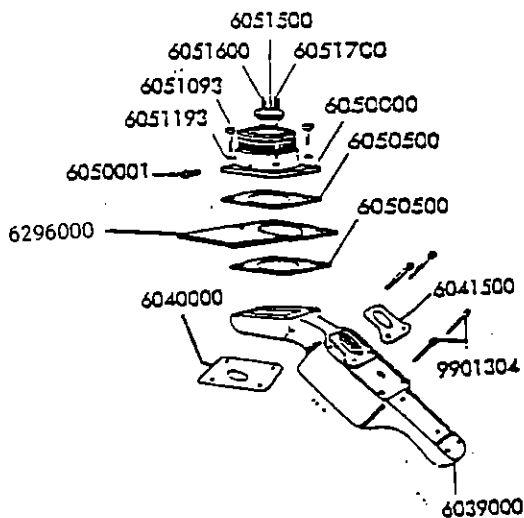
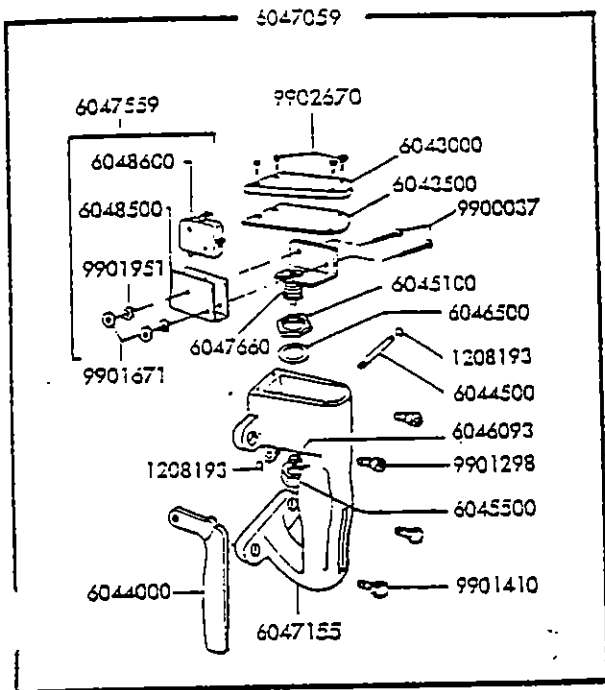
** Listed but not illustrated.

PARTS LIST

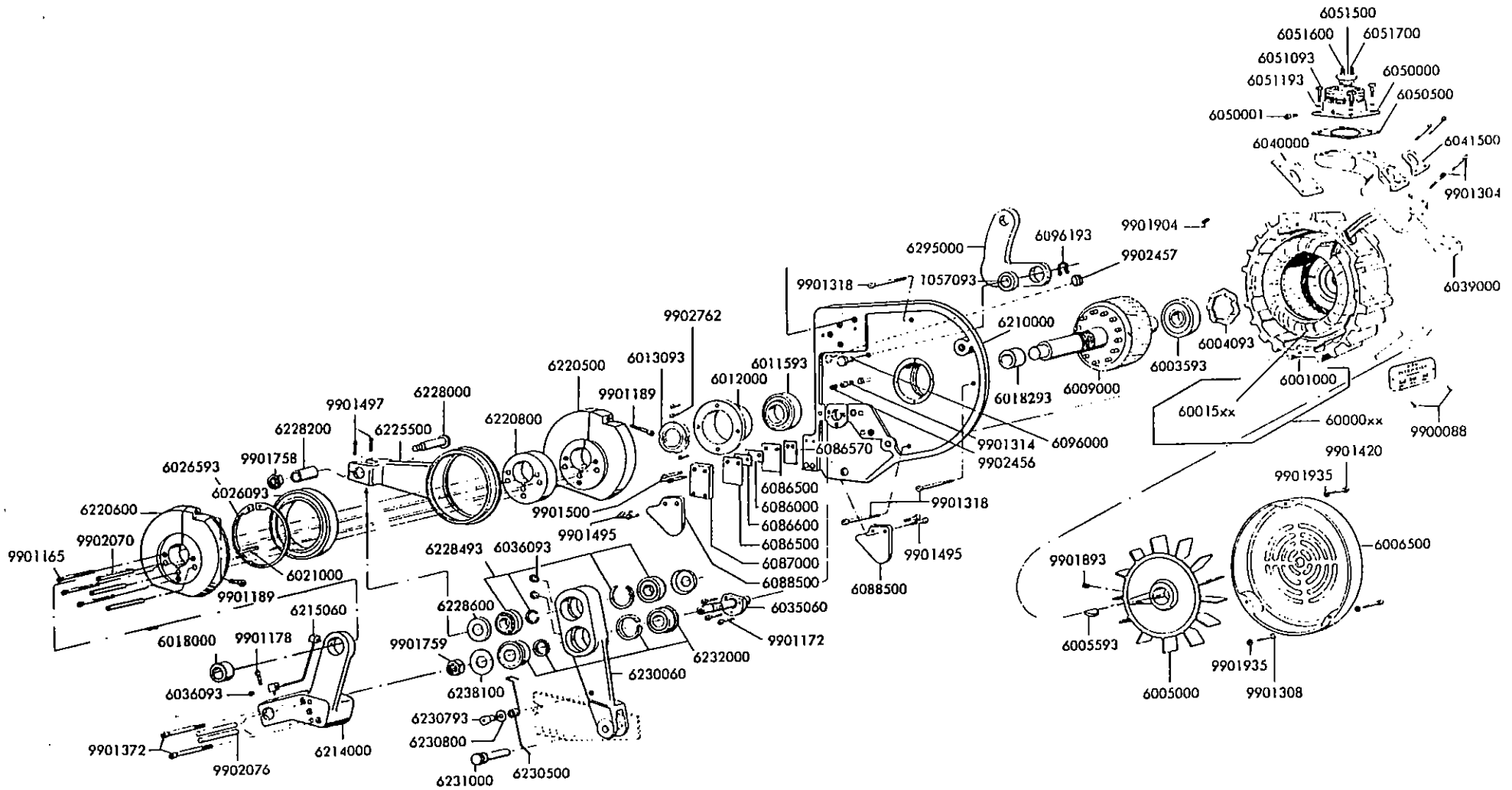


PARTS LIST INSERT PACEMAKER

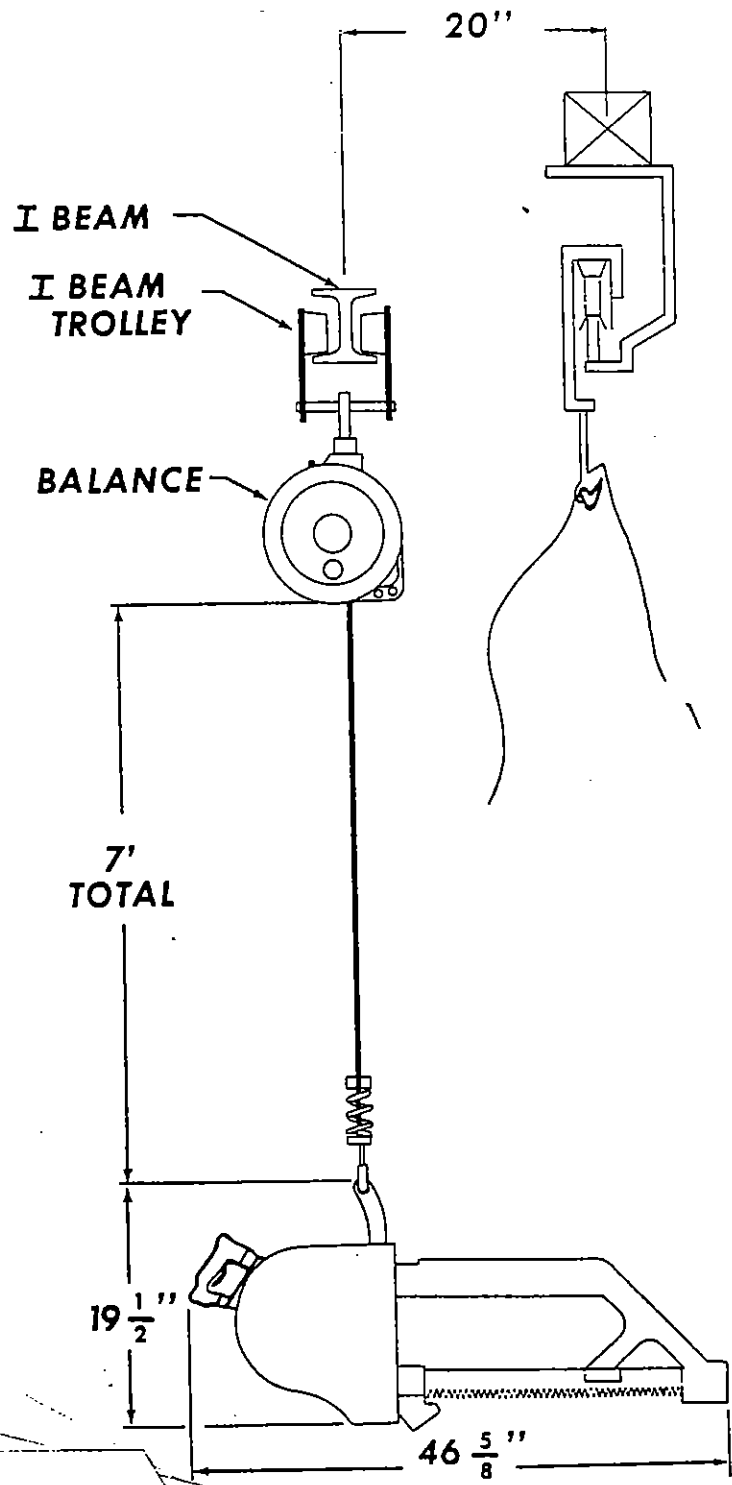
Part Number	No. Rec'd.	Description
1208193	2	Retaining Ring
6039000	1	Handle Bracket
6040000	1	Gasket
6041500	1	Gasket
6043000	1	Handle Cap
6043500	1	Gasket
6044000	1	Switch Trigger
6044500	1	Trigger Hinge Pin
6045100	1	Switch Nut - Thin
6045500	1	Switch Locknut
6046093	1	Seal Ring - "O" Ring
6046500	1	Switch Nut Gasket
6047059	1	Rear Handle Complete Ass.
6047155	1	Rear Handle & Cap S.A.
6047559	1	Switch Assy Complete
6047660	1	Switch Bracket S.A.
6048500	1	Insulator
6048600	1	Switch
6050000	1	Plug Shell Base
6050001	2	Screw
6050500	2	Gasket
6051093	4	Mounting Screw
6051193	4	Lockwasher
6051500	1	6-Post Male Insert Coupling Assembly
6051600	5	Male Post - Plain
6051700	1	Male Post with Lug
9901298	2	Screw
9901304	4	Bracket Screw
9901410	2	Hex Head Screw
9901671	2	Hex Nut
9901951	2	Washer
9902570	4	Screw
6296000	1	Dual Switch Wire Guard



"Pacemaker" Main Frame Assembly

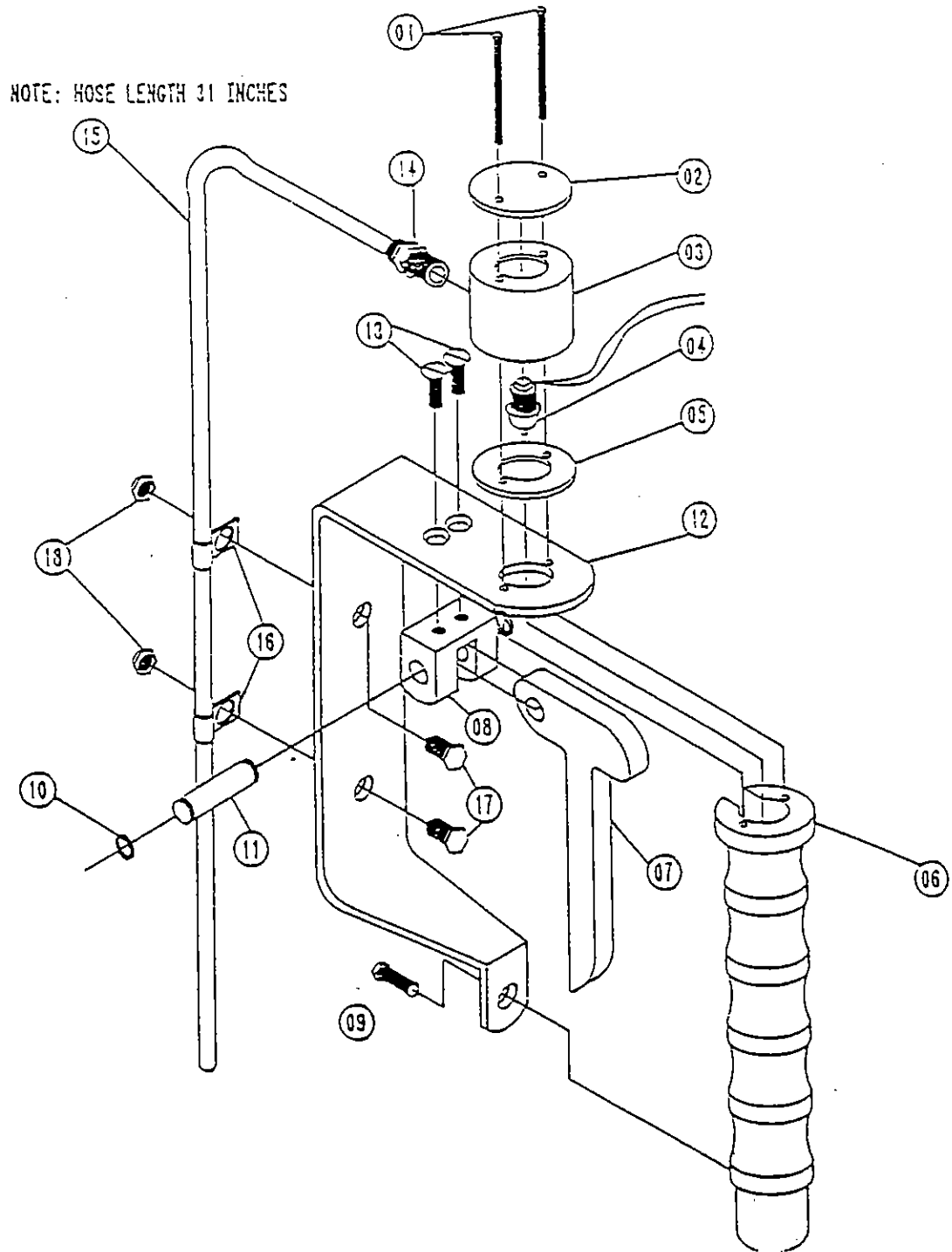


MOVING TROLLEY INSTALLATION DRAWING FOR B & D BEEF CARCASS SPLITTERS



"TRADITIONAL" PACEMAKER

6240055 DUAL CONTROL HANDLE ASSEMBLY



1	9902769	Hex Hd Cap Screw (2 Req'd)	10	1208193	Retaining Ring (2)
2	9753532	Cover Plate	11	6044500	Pin
3	9753530	Switch Housing	12	9753547	Finger Guard
4	9753549	Switch - Pigtail Lg 36"	13	9900396	Slotted Flt Hd Screw
5	9753528	Spacer	14	6523193	1/8" Brass Male Con
6	9753506	Modular Handle - 6"	15	6523391	1/4" O.D. Hose
7	9753541	Lever	16	6288025	Wire Clip
8	9753543	Pivot Bracket	17	9902763	Hex Hd Cap Screw (2)
9	9901408	Hex Hd Cap Screw	18	9901750	10-32 Stop Nut (2)



INVEST IN THE BEST... BUY B&D PACKER APPROVED MACHINES

**USDA
APPROVED**



© COPYRIGHT 1994

FOR MORE INFORMATION, CONTACT:

BEST & DONOVAN

5570 Creek Road, Cincinnati, OH 45242, USA

TOLL FREE:
TELEPHONE:
CABLE:
FAX:

1-800-553-2378
(513) 791-9180
WEPCO
513-791-0925