



BEST & DONOVAN

MODELS "8", "10" & "12"
AIR TRI-PURPOSE SAWS
PRIMAL CUT, BEEF RIB BLOCKER, HAM
MARKER & SHOULDER SAW

MODEL "AH"
AIR HOG BREASTBONE OPENING SAW

MODEL "AHS"
AIR HOG BREASTBONE OPENING SAW

MODEL "PSA8"
PORK SCRIBE SAW

PARTS AND SERVICE MANUAL



BEST & DONOVAN

5570 CREEK ROAD, CINCINNATI, OHIO 45242, USA
TOLL FREE: 1-800-553-2378 TEL.: 1-513-791-9180
FAX: 1-513-791-0925 CABLE: WEPCO

WARRANTY

Best & Donovan warrants the machine against defective parts & workmanship for six (6) months from date of factory shipment. In the fulfillment of its warranty, the sole obligation of Seller shall be to repair or replace, at its option F.O.B. its factory, shipping charges prepaid, and which after inspection by Seller are found to be defective. Buyer shall notify Seller of defect in writing, promptly upon discovery, within the warranty period. This warranty does not cover defects caused by corrosion or normal deterioration. It does not extend to consequential damage, loss or delay associated with a warranty defect and it does not cover any costs of labor, travel or other expenses associated with the repair or replacement of defective parts. Seller assumes no liability for product loss or other claims whatsoever arising out of the use or application of the machine in Meat Slaughtering/Processing operations, whether the machine is used alone or in conjoint use with other Meat Slaughtering/Processing Machines or Processes. This warranty is voided if repairs, replacements or alterations are made by others without prior authorization by Seller. Notwithstanding the foregoing, Seller's warranty obligations with respect to any items not manufactured by Seller shall not exceed the obligations undertaken by the manufacturer thereof under express warranty to the Seller. This express warranty is in lieu of all other warranties of fitness of the machine for any particular purpose.

SERVICE INFORMATION AND PREVENTATIVE MAINTENANCE SCHEDULE FOR BEST & DONOVAN

BEST & DONOVAN REALIZES THAT THERE MAY BE MANY DIFFERENT APPROACHES TO PROPER MAINTENANCE, ASSEMBLY, DISASSEMBLY, AND ADJUSTMENT PROCEDURES. THE FOLLOWING PROCEDURES SHOULD BE USED AS A GUIDELINE AND WHETHER ACCEPTED OR USED IN THEIR ENTIRETY OR PARTIALLY, IS NOT A SUBSTITUTE FOR PROPER MECHANICAL ABILITY AND/OR KNOWLEDGE.

ONLY PERSONNEL WITH PROPER MECHANICAL AND TECHNICAL SKILLS SHOULD ATTEMPT ANY SERVICE PROCEDURES.

THE FOLLOWING SERVICE INFORMATION WILL DESCRIBE IMPORTANT NOTATIONS REQUIRING SPECIAL ATTENTION BY THE TECHNICIAN(S) PERFORMING SERVICE TASKS. THEY ARE : **WARNING, CAUTION, and NOTE.**

WARNING : WILL DESCRIBE CONDITIONS THAT EXIST OR POTENTIALLY EXIST THAT CAN CAUSE INJURY OR DEATH.

CAUTION : WILL DESCRIBE CONDITIONS THAT EXIST OR POTENTIALLY EXIST THAT CAN CAUSE INJURY OR EQUIPMENT FAILURE.

NOTE : WILL DESCRIBE A SPECIFIC HELPFUL PROCEDURE.

RECEIVING & INSPECTION

INSPECT YOUR BEST & DONOVAN AIR TRI-PURPOSE SAW FOR POSSIBLE DAMAGE AS SOON AS YOU RECEIVE IT. IF YOU DISCOVER ANY DAMAGE, NOTIFY CARRIER'S AGENT AT ONCE AND REQUEST HIM TO INSPECT THE DAMAGE, ALSO NOTIFY BEST & DONOVAN. CHECK PACKING LIST AGAINST THE CONTENTS.

INSTALLATION OF SAW

COUNTER-BALANCER PART # 6342400

MODELS "8", "10" & "12" ATP
MODEL "AHS" HBBO
MODEL "PSA8" PORK SCRIBE SAW

COUNTER-BALANCER PART # 6343900

MODEL "AH" HBBO

AIR REQUIREMENT

AIR TRI-PURPOSE SAWS REQUIRE 90 P.S.I. AT 40 CFM TO OBTAIN MAXIMUM HORSEPOWER. A 3/4" AIR FILTER/LUBRICATOR/REGULATOR (B&D #6337793) SHOULD BE INSTALLED AHEAD OF A 1/2" FLEXIBLE LINE TO THE TOOL. INSTALL A QUICK DISCONNECT AT THE TOOL. ALL FITTINGS AND HOSES SHOULD HAVE A MINIMUM OF 1/2" I.D. THE LUBRICATOR SHOULD BE SET TO GIVE 5 TO 10 DROPS OF APPROVED USDA MINERAL OIL PER MINUTE.

AIR LINE COMPONENTS

BEFORE INSTALLING THIS TOOL IN AN EXISTING SYSTEM, THE AIR LINES SHOULD BE BLOWN FREE OF ANY CONTAMINANTS.

AIR LINES :

SIGNAL AIR LINES TO BE NO LARGER THAN 1/4" (6.35 mm) O.D.
MAIN AIR TO TOOL TO BE NO SMALLER THAN 1/2" (12.70 mm) O.D.

POPPET VALVE INSTALLATION

FOR FASTER PRESSURIZING AND EXHAUSTING OF THE CONTROL CIRCUIT AIR COMPONENTS, THE POPPET VALVE SHOULD BE INSTALLED AS CLOSE AS POSSIBLE TO THE TOOL.

VALVE INLET (PORT 1)

BE SURE THAT THE SUPPLY LINE IS OF ADEQUATE SIZE AND DOESN'T RESTRICT THE AIR SUPPLY BECAUSE OF A CRIMP IN THE LINE, SHARP BEND, OR A CLOGGED FILTER.

VALVE OUTLET (PORT 2)

THIS PORT GOES TO THE TOOL MAIN AIR SUPPLY. KEEP THIS LINE FREE OF CRIMPS & SHARP BENDS ALSO.

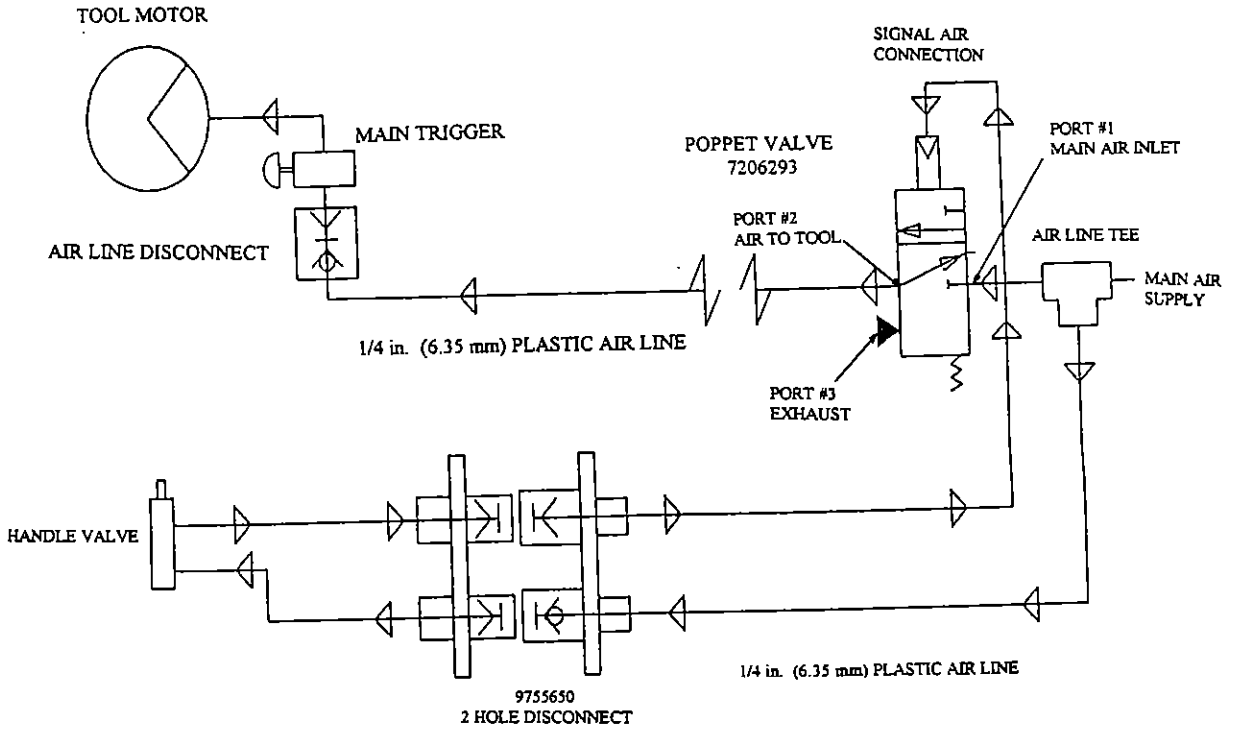
VALVE EXHAUST (PORT 3)

DO NOT RESTRICT THE AIR FLOW FROM THE EXHAUST PORT AS THIS CAN ADVERSELY AFFECT THE OPERATION OF THE VALVE. IF A SILENCER IS USED, MAKE SURE THAT IT IS OF ADEQUATE SIZE, NOT TO CAUSE RESTRICTION TO THE FLOW OF THE EXHAUST AIR.

RETURN AIR FROM THE TRIGGER OF THE TOOL IS CONNECTED TO THE TOP OF THE VALVE. NO LESS THAN A 1/4" (6.35 mm) O.D. AIR LINE SHOULD BE USED FOR PROPER OPERATION.

REFER TO THE NEXT PAGE FOR INSTALLATION DIAGRAM.

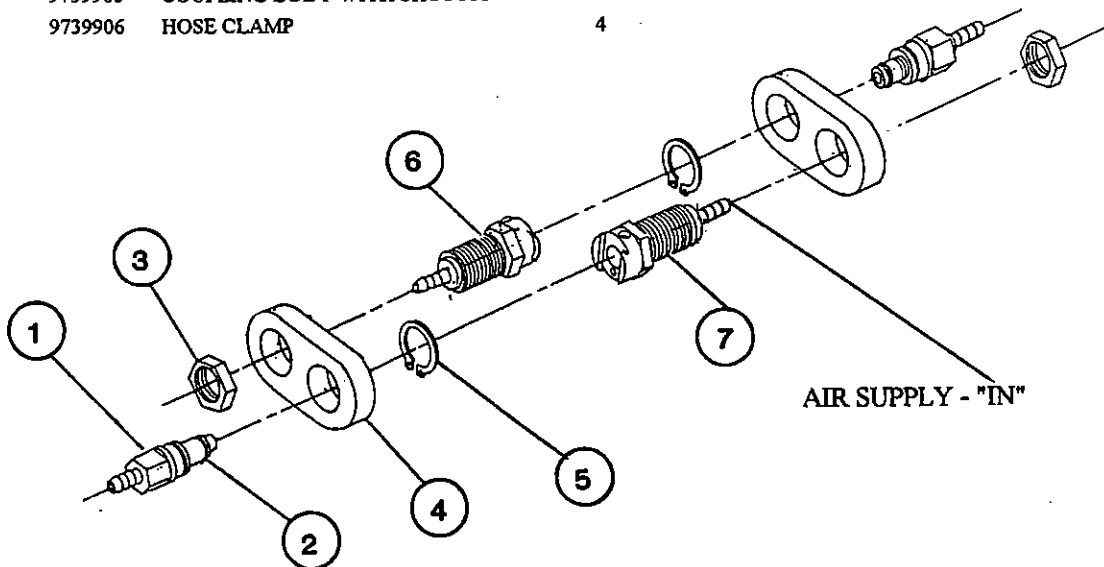
PNEUMATIC INSTALLATION DIAGRAM



NOTE :
 15 ft. (4.57 meters) MAXIMUM HOSE LENGTH
 USE 10 ft. (3.05 meters) WHENEVER POSSIBLE.

9755650 QUICK DISCONNECT ASSY.

REF. NO.	PART NO.	DESCRIPTION	QTY.
1	9739969	COUPLING INSERT	2
2	9739974	O-RING	2
3	9739972	PANEL NUT	2
4	9739959	BRACKET	2
5	9739970	RETAINING RING	2
6	9739967	COUPLING BODY	1
7	9739965	COUPLING BODY WITH SHUTOFF	1
N/S	9739906	HOSE CLAMP	4



WARNING

ALWAYS EXERCISE CARE WHEN OPERATING OR PERFORMING MAINTENANCE, REPAIRS AND ADJUSTMENTS. ALWAYS DISCONNECT ELECTRICAL OR AIR CONNECTOR BEFORE ATTEMPTING TO WORK ON THE MACHINES. BE SURE ALL ELECTRICAL MACHINES ARE PROPERLY GROUNDED. NEVER ALLOW ANY PART OF YOUR PERSON OR ANY OTHER PERSON TO BE IN THE PATH OF THE BLADE WHEN THE MACHINE IS IN SERVICE. ONLY GRIP MACHINE BY THE HANDLES PROVIDED.

MAINTENANCE

PREVENTATIVE MAINTENANCE IS THE FIRST STEP OF GOOD TOOL MAINTENANCE. A PERIODIC CHECK SHOULD BE MADE TO REPLACE WORN PARTS AND TO INSPECT LUBRICATION LEVELS & EFFECTIVENESS. A WORN PART REPLACED IN TIME MAY SAVE REPAIRS LATER.

THIS IS A PRECISION MACHINE MADE UP OF PRECISION PARTS AND SHOULD BE HANDLED WITH EXTREME CARE. DO NOT SQUEEZE MACHINE OR PARTS IN A HOLDING DEVICE OR OTHERWISE MISUSE. TOO MUCH PRESSURE EXERTED IN A HOLDING DEVICE MAY CAUSE DISTORTION TO THE PART. BE SURE THAT YOU HAVE THE CORRECT TOOLS AND FIXTURES BEFORE ASSEMBLING (OR DISASSEMBLING) THIS TOOL. WHEN ASSEMBLING (OR DISASSEMBLING) PARTS WHICH HAVE A PRESS FIT, APPLY PRESSURE EVENLY TO THE PARTS. TO ASSEMBLE (OR DISASSEMBLY) BEARINGS, THE PRESSURE SHOULD BE APPLIED TO THE FACE OF THE INNER OR OUTER RACE, WHICHEVER IS ADJACENT TO THE MATING PART. IF THIS IS NOT DONE, IT WILL DAMAGE THE BEARING RACES MAKING IT NECESSARY TO REPLACE THEM.

OPEN BEARINGS MAY BE WASHED IN ONLY FRESH, CLEAN SOLVENT. BEARINGS SHOULD BE WASHED IN A CONTAINER WITH A SCREENED FALSE BOTTOM TO PREVENT FOREIGN PARTICLES FORM BEING STIRRED UP AND CONTAMINATING THE PART. AFTER CLEANING, BLOW SOLVENT OUT OF THE BEARING WITH DRY, CLEAN AIR & RE-PACK WITH GOOD GRADE BEARING GREASE. DO NOT SPIN BEARING, OR ALLOW IT TO SPIN WHEN BLOWING OFF SOLVENT. DO NOT ATTEMPT TO WASH A SEALED OR SHIELDED BEARING.

BEFORE DISASSEMBLING A TOOL, THE AREA AROUND THE WORK BENCH SHOULD BE CLEAN & FREE FROM METAL CHIPS AND OTHER FOREIGN MATTER. IT IS GOOD PRACTICE TO SPREAD A CLEAN CLOTH ON THE WORK BENCH TO PREVENT THE LOSS OF SMALL PARTS.

IT IS IMPORTANT THAT ALL PARTS ARE THOROUGHLY CLEANED & INSPECTED BEFORE ASSEMBLING. THE SLIGHTEST PARTICLES OF DIRT CAN CREATE EXCESSIVE RUN-OUT IN SPINDLE OR OUT OF SQUARENESS IN THE BEARING MOUNTING, CAUSING VIBRATIONS AND LOSS OF SPEED, ULTIMATELY DAMAGING THE MACHINE.

BEFORE REASSEMBLING, ALL PARTS SHOULD BE WASHED AND INSPECTED, REPLACING ANY WORN OR DEFECTIVE PARTS. APPLYING A SMALL AMOUNT OF GREASE TO STEEL BALLS, SPRINGS AND OTHER SMALL PARTS WILL OFTEN HOLD THEM IN PLACE WHILE REASSEMBLING. LUBRICANT IS RECOMMENDED FOR THE INSTALLATION OF "O" RINGS.

WHEN REPAIRS ARE NECESSARY, CONSULT DRAWING CONTAINING THE PART FOR IDENTIFICATION. WHEN ORDERING REPAIR OR SPARE PARTS, BE SURE TO LIST MODEL NUMBER, PART NUMBER & PART NAME TO ASSURE PROMPT AND ACCURATE SHIPMENT OF YOUR ORDER.

CLEANING

THE SAW BLADE MAY BE DIPPED IN A STERILIZER (180 DEGREE WATER MINIMUM FOR USDA), BUT AVOID DIPPING THE GEAR ASSEMBLY. THE EXTERIOR CAN BE SPRAYED CLEAN WITH STEAM OR MEDIUM PRESSURE HOT WATER. AVOID HIGH PRESSURE HOT WATER, CAN CAUSE DAMAGE TO THE GASKET AREAS. DO NOT SPRAY WATER INTO THE INLET OR EXHAUST AIR LINES.

FLUSHING THE AIR MOTOR

IT IS RECOMMENDED THAT THE AIR MOTOR BE FLUSHED WITH A CLEANING SOLUTION ONCE A WEEK. AFTER FLUSHING MOTOR, IT IS ADVISABLE TO PUT 20 TO 30 DROPS OF LUBRICATING OIL IN THE AIR INLET OF THE MOTOR. RUN THE MOTOR BRIEFLY TO GET THE LUBRICATING OIL INTO THE VANES OF THE MOTOR.

LUBRICATION

THE GEARS IN THE STANDARD SHOULD BE GREASED ONCE PER SHIFT. THE AIR MOTOR PLANETARY GEARS MUST BE LUBRICATED TWICE PER SHIFT, LIGHTLY (ONE SHOT). THE IN-LINE LUBRICATOR FOR THE AIR MOTOR SHOULD BE SET TO GIVE 5 TO 10 DROPS OF LUBRICATING OIL PER MINUTE MAXIMUM.

DOUBLE GEAR BLADE INSTALLATION

WARNING

ALWAYS MAKE ABSOLUTELY CERTAIN THAT YOUR SAW IS DISCONNECTED FROM THE POWER SOURCE BEFORE REMOVING OR INSTALLING THE SAW BLADE.

CAUTION : IF A TOOTH SHOULD BREAK OFF A BLADE WHILE THE TOOL IS IN OPERATION, THE OPERATOR OR SOMEONE ELSE COULD BE INJURED. ALWAYS INSPECT THE BLADES FOR FATIGUE CRACKS BEFORE INSTALLING OR USING.

PLACE THE SAW BLADE ON THE SAW GEAR (6), ALIGNING THE PINS OF THE GEAR WITH THE HOLES IN THE BLADE ARBOR (CENTER HOLE) OF THE BLADE. INCORRECT SEATING OF THE BLADE WILL CAUSE BAD CUTS AND DANGER TO THE OPERATOR. THE TEETH OF THE BLADE SHOULD POINT DOWNWARD IN A COUNTER-CLOCKWISE DIRECTION. SCREW THE SAW NUT & COVER (1) ONTO THE THREADED COLLAR OF THE SAW GEAR (6) MAKING SURE THE SAW BLADE STAYS SEATED CORRECTLY. THREAD IS RIGHT HANDED. INSERT A PIN THROUGH THE HOLE IN THE BLADE THAT LINES UP WITH THE HOLE IN THE BLADE GUARD (8). USING SAW NUT WRENCH #6114050 AND A SMALL HAMMER. TIGHTEN THE SAW NUT (1) SECURELY.

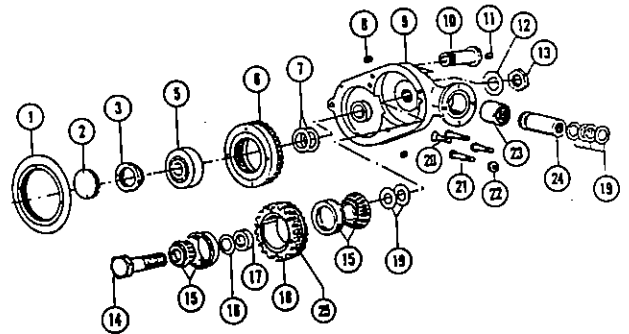
NOTE : IF A PIN IS NOT USED TO LOCK THE BLADE FROM TURNING, IT IS POSSIBLE TO DAMAGE THE GEARS IN THE STANDARD FROM THE IMPACT OF THE HAMMER.

ASSEMBLING OF DOUBLE GEAR STANDARD

1. ASSEMBLE THE MOTOR AND ATTACH THE PINION GEAR (24)
2. INSTALL NEEDLE BEARING (23) INTO THE STANDARD (9) WITH THE LETTERING ON THE BEARING TOWARD THE MOTOR.
3. INSTALL BARE STANDARD (9) OVER PINION GEAR (24) AND SECURE WITH TWO BOLTS (21).
4. SCREW THE DOUBLE GEAR STUD (14) FULLY INTO THE STANDARD.
5. USING A PINION GAUGE #8840100 (NOT SHOWN), SET ON THE TOP OR END OF THE PINION GEAR AND WITH A FEELER GAUGE, MEASURE THE CLEARANCE BETWEEN THE END OF THE PINION GAUGE AND THE SHANK OF THE STUD (14). RECORD THE DIMENSION.
6. REMOVE THE STANDARD (9) FROM THE MOTOR AND INSTALL THE CORRECT AMOUNT OF SHIMS (19), SAME AS THE RECORDED READING BEHIND THE PINION.
7. ASSEMBLE STANDARD TO EXTENSION OR ADAPTER USING 2 BOLTS (21) AND CHECK SHIMMING. REMOVE THE STUD WHEN SHIMMING IS CORRECT.

ADJUSTMENT OF DOUBLE GEAR BEARINGS AND INSTALLATION OF GEARS INTO THE STANDARD.

1. MAKE SURE THE OUTER RACES (15) ARE INSTALLED CORRECTLY ON THE DOUBLE GEAR (18) BY PRESSING IN A VISE OR ARBOR PRESS EVENLY.
2. PRESS THE FIRST INNER BEARING (15) ONTO THE DOUBLE GEAR STUD (14). INSERT THE STUD INTO THE DOUBLE GEAR (18), SLIDE A LUBRICATING SPACER (17) AND THE SECOND INNER BEARING OVER THE STUD. **DO NOT LUBRICATE THE BEARINGS AT THIS TIME.**
3. OBTAIN A 1/2" PIPE NIPPLE APPROX. 2" LONG OR SOMETHING COMPARABLE TO SLIDE OVER THE THREADED END OF THE STUD (14).
4. WITH A VISE OR ARBOR PRESS, SQUEEZE THE HEAD OF THE STUD AND THE PIPE NIPPLE TOGETHER, COMPRESSING THE BEARINGS. WHILE SQUEEZING, MAKE SURE THE GEAR WILL ROTATE FREELY. IF THE GEAR STARTS TO SEIZE, THE ASSEMBLY WILL HAVE TO BE TAKEN APART AND SHIMS (16) ADDED NEXT TO THE LUBRICATING SPACER (17) TO FREE THE BEARINGS. PROPER LOADING OF THE BEARINGS IS ACCOMPLISH WHEN 70-75 TORQUE FOOT POUNDS ARE APPLIED AND THE BEARING SPINS FREELY WITH NO SIDE PLAY IN THE GEAR.



DOUBLE GEAR STANDARD SET-UP CONTINUED

- DISASSEMBLE THE BEARINGS ONCE THE PROPER LOAD IS SET AND PACK THE BEARINGS WITH APPROVED USDA GREASE. ASSEMBLE AFTER PACKING.
- INSTALL THE GEAR ASSEMBLY INTO THE STANDARD AND SLOWLY TIGHTEN. YOU ARE NOW TRYING TO SET THE PROPER BACKLASH OF THE GEAR ASSEMBLY TO THE PINION GEAR. THIS IS ACCOMPLISHED BY ADDING, IF NECESSARY, SHIMS (19) BEHIND THE DOUBLE GEAR. THE CORRECT BACKLASH IS WHEN YOU CAN FEEL A MINIMUM OF PLAY BETWEEN THE TWO GEARS MESHING. THERE HAS TO BE SOME BACKLASH OR THE GEARS WILL WEAR PREMATURELY. TIGHTEN THE STUD USING CAUTION NOT TO PULL TOO TIGHT. INSTALL LOCK WASHER (12) AND NUT (13), HOLD THE STUD (14) WHILE TIGHTENING NUT (13) TIGHT. LOCK THE WASHER AROUND THE NUT. PACK THE STANDARD 2/3 FULL OF GREASE AROUND THE PINION AREA.
- PRESS BEARING (5) INTO THE SAW GEAR (6). PRESS THE STUD (10) INTO THE STANDARD. PRESS BEARING AND GEAR ASSEMBLY ONTO THE STUD (10).
- CHECK THE CLEARANCE BETWEEN TEETH ON THE SAW GEAR AND TEETH ON THE DOUBLE GEAR. THERE SHOULD BE A CLEARANCE OF APPROX. .010". TO GET THIS CLEARANCE, ADD SHIMS (7) UNDER BEARINGS (5) TO RAISE THE SAW GEAR.
- INSTALL LOCKING NUT (3), USING WRENCH #6114450 WHEN CORRECT CLEARANCE IS ACCOMPLISHED AND TIGHTEN. (L/H THREADS.)
- INSTALL BEARING LOCK NUT (2) AND TIGHTEN DOWN USING WRENCH #8861500. (L/H THREADS)
- GREASE EACH FITTING WITH TWO (2) SHOTS OF GREASE USING GREASE GUN #2102900.
- BE SURE ALL PARTS HAVE BEEN THOROUGHLY TIGHTENED.

AIR MOTOR MAINTENANCE

DISASSEMBLY

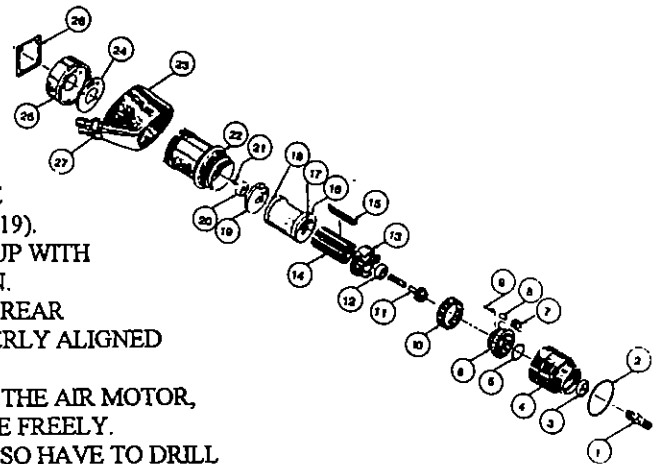
- REMOVE THE FRAME ASSEMBLY COMPLETE, 4 SCREWS AT THE FRONT ADAPTER.
- REMOVE THE REAR HANDLE COMPLETE.
- HOLD THE AIR MOTOR IN A SOFT JAW VISE BY GRIPPING ON THE REAR HEAD FLATS (25) "ONLY".
- UNSCREW THE SET SCREW IN THE ADAPTER. UNSCREW THE ADAPTER FROM THE GEAR CAGE (4), LEFT HAND THREADS.
- UNSCREW THE GEAR CASE (4) FROM THE AIR MOTOR (22) - RIGHT HAND THREADS, BY GRIPPING ON THE FLATS WHICH ARE ON THE GEAR CASE (4). THE AIR CYLINDER ASSEMBLY(11-21) CAN NOW BE REMOVED.
- UNSCREW THE MOTOR HOUSING (22), RIGHT HAND THREADS, FROM THE REAR HEAD (25).
- USING A PUNCH, DRIVE THE LONG SPINDLE GEAR (11) THROUGH THE REAR MOTOR BEARING (20). THE AIR MOTOR WILL NOW FALL APART.

PLANETARY GEARS

- LIFT THE RING GEAR (10) & THE GEAR CAGE ASSEMBLY OUT OF THE GEAR CASE (4). REMOVE THE RETAINING RING FROM THE GEAR CAGE PUSH OUT THE IDLER PINS (9) AND THE IDLER GEARS (7) WILL FALL OUT.
- PUSH THE SPINDLE (1) OUT OF THE GEAR CASE. DRIVE OUT THE BEARING (3) & THE SEAL (5).

REASSEMBLE

- REPLACE ALL WORN OR DAMAGED PARTS AND REASSEMBLE BY REVERSING THIS PROCEDURE.
- THE GEARS (7) IN THE PLANETARY GEAR SYSTEM MUST ROTATE FREELY AND SHOULD BE GREASED WHEN REASSEMBLING.
- WHEN ASSEMBLING THE AIR MOTOR, THE PIN (18) IN THE CYLINDER (16) MUST LINE UP ON THE END PLATES (13 & 19). THE SLOT CUT IN THE REAR END PLATE (19) MUST LINE UP WITH THE SLOT IN THE CYLINDER TO PROPERLY ALLOW AIR IN.
- WHEN ASSEMBLING THE AIR MOTOR ASSEMBLY TO THE REAR HEAD (25), THE PIN AND AIR SLOT MUST ALSO BE PROPERLY ALIGNED TO ALLOW AIR IN.
- BEFORE ATTACHING THE PLANETARY GEAR SYSTEM TO THE AIR MOTOR, INSURE THAT THE LONG SPINDLE GEAR (1) WILL ROTATE FREELY.
- IF YOU HAVE INSTALLED A NEW ADAPTER, YOU WILL ALSO HAVE TO DRILL A 1/4" HOLE AND TAP 5/16-18 FOR THE SET SCREW. TO GET CORRECT ALIGNMENT, MARK THE CENTER LINE FLAT ON THE GEAR CASE, SCREW THE ADAPTER ON AND TRANSFER A CENTERLINE MARK. FURTHER ALIGNMENT CAN BE ACCOMPLISHED THROUGH THE SHIMS.

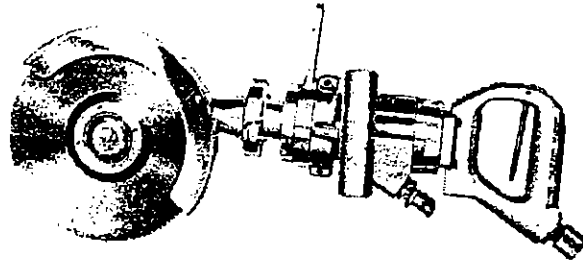




ALL TOOLS ON THE PAGE ARE FEATURE DUAL CONTROL HANDLES
7206293 POPPET VALVE USE IN THE CONTROL AIR LINE

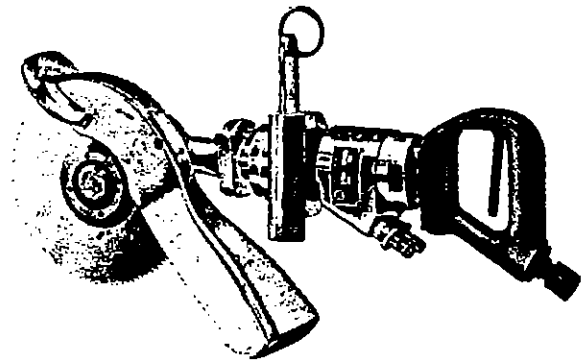
***AIR TRI-PURPOSE (ATP)
HAM MARKER SAW***

WEIGHT : 16 LBS. (7.25 Kilos.)
LENGTH : 22 1/2 IN. (571.5 mm.)
BLADE : 8 IN. (203.2 mm.)
 10 IN. (254.0 mm.)
 12 IN. (304.8 mm.)
COUNTER-BALANCER #6342400



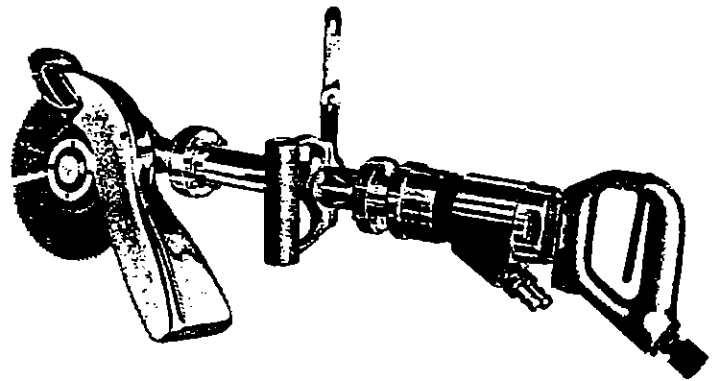
***MODEL "AHS" HOG
BREASTBONE OPENER (HBBO)***

WEIGHT : 16 LBS. (7.25 Kilos.)
LENGTH : 22 1/2 IN. (571.5 mm.)
BLADE : 6 1/2 IN. (165.1 mm.)
 8 IN. (203.2 mm.)
COUNTER-BALANCER #6342400



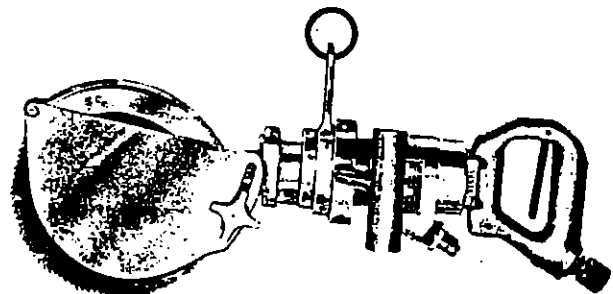
***MODEL "AH" HOG
BREASTBONE OPENER (HBBO)***

WEIGHT : 19 LBS. (8.62 Kilos.)
LENGTH : 31 1/2 IN. (800.1 mm.)
BLADE : 6 1/2 IN. (165.1 mm.)
 8 IN. (203.2 mm.)
COUNTER-BALANCER #6343900



***MODEL "PSA8"
PORK SCRIBE SAW***

WEIGHT : 16 LBS. (7.26 Kilos.)
LENGTH : 22 1/2 IN. (571.5 mm.)
BLADE : 8 IN. (203.2 mm.)
ADJUSTABLE DEPTH GAUGE
COUNTER-BALANCER # 6342400



SAW BLADE DESCRIPTION & SHARPENING

BLADES FOR 8" ATP, "AH" HBBO & "AHS" HBBO

PART # 6104200	8" (203.2 mm)	176 TEETH; 8 POINT (7 TEETH/INCH) .0025 - .007 SET/SIDE ALTERNATELY FILE SQUARE FACE, ROUNDED GULLET
PART # 6104400	8" (203.2 mm)	100 TEETH; 5 POINT (4 TEETH/INCH) .0025 - .007 SET/SIDE ALTERNATELY FILE SQUARE FACE, ROUNDED GULLET

BLADES FOR 10" ATP

PART # 6104600	10" (254.0 mm)	110 TEETH; 4 1/2 POINT (3 1/2 TEETH/INCH) .006 - .011 SET/SIDE ALTERNATELY FILE SQUARE FACE, ROUNDED GULLET
PART # 6104800	10" (254.0 mm)	220 TEETH; 8 POINT (7 TEETH/INCH) .0025 - .007 SET/SIDE ALTERNATELY FILE SQUARE FACE, ROUNDED GULLET

BLADES FOR 12" ATP

PART # 6103600	12" (304.8 mm)	72 TEETH; 3 POINT (2 TEETH/INCH) .0025 - .007 SET/SIDE ALTERNATELY FILE SQUARE FACE, ROUNDED GULLET
PART # 6106000	12" (304.8 mm)	264 TEETH; 8 POINT (7 TEETH/INCH) .0025 - .007 SET/SIDE ALTERNATELY FILE SQUARE FACE, ROUNDED GULLET

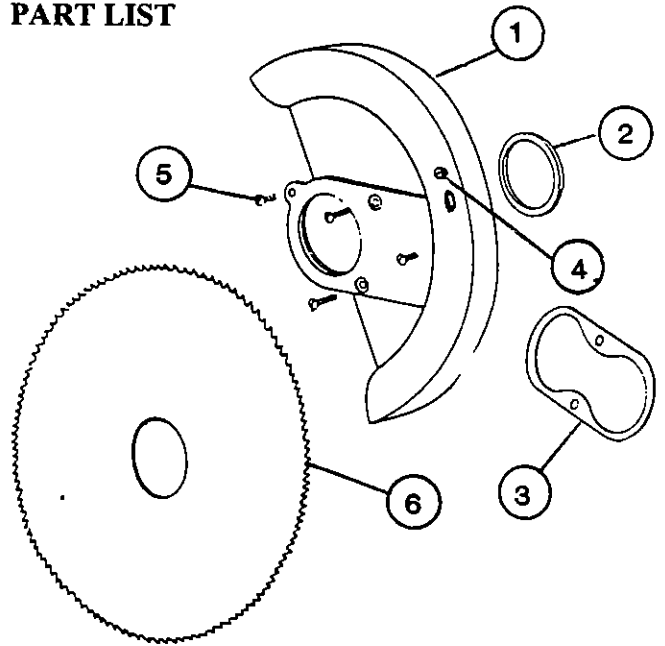
BLADE FOR "AH" HBBO & "AHS" HBBO "ONLY"

PART # 6104000	6 1/2" (165.1 mm)	142 TEETH; 8 POINT (7 TEETH/INCH) .0025 - .007 SET/SIDE ALTERNATELY FILE SQUARE FACE, ROUNDED GULLET
----------------	-------------------	---

CALL BEST & DONOVAN WITH ANY QUESTIONS ABOUT THE BLADES AVAILABLE FOR THESE TOOLS.

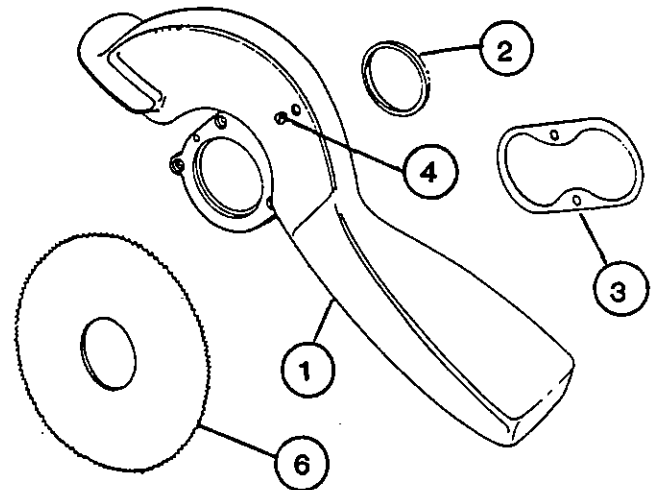
**8"-10"-12" AIR TRI-PURPOSE SAW (ATP)
GUARD & BLADE PART LIST**

<u>REF. NO.</u>	<u>PART NO.</u>	<u>DESCRIPTION</u>	<u>QTY.</u>
1	8856000	8" SAW GUARD	1
	8866100	10" SAW GUARD	1
	8856700	12" SAW GUARD	1
2	8851000	GUARD GREASE SEAL	1
3	8857000	GUARD GASKET	1
4	8856693	PLUG	1
5	9800121	SHORT SCREW	1
	9800123	MEDIUM SCREW	1
	9800124	LONG SCREW	2
6	6104200	8" 176 TOOTH/8 POINT BLADE	1
	6104400	8" 100 TOOTH/5 POINT BLADE	1
	6104600	10" 110 TOOTH/5 POINT BLADE	1
	6104800	10" 220 TOOTH/8 POINT BLADE	1
	6103600	12" 72 TOOTH BLADE	1
	6106000	12" 264 TOOTH/8 POINT BLADE	1



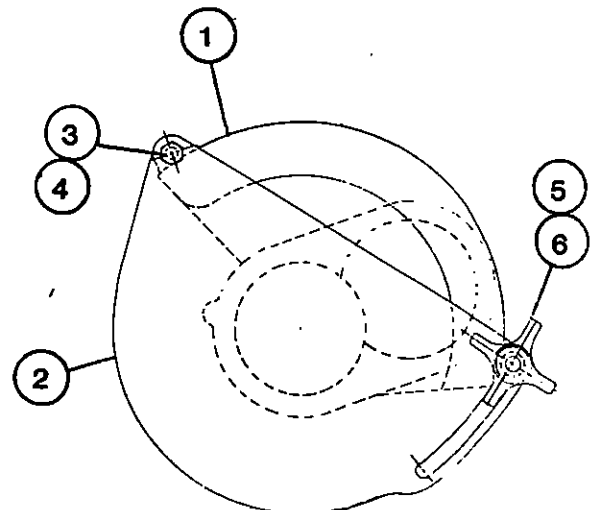
**MODEL "AH" & "AHS" HOG BREASTBONE OPENER SAW (HBBO)
GUARD & BLADE PART LIST**

<u>REF. NO.</u>	<u>PART NO.</u>	<u>DESCRIPTION</u>	<u>QTY.</u>
1	8856500	8" SAW GUARD	1
2	8851000	GUARD GREASE SEAL	1
3	8857000	GUARD GASKET	1
4	8856693	PLUG	1
5	9800121	SHORT SCREW	1
	9800123	MEDIUM SCREW	1
	9800124	LONG SCREW	2
6	6104000	6 1/2" 142 TOOTH/8 POINT BLADE	1
	6104200	8" 176 TOOTH/8 POINT BLADE	1
	6104400	8" 100 TOOTH/5 POINT BLADE	1



**MODEL "PSA8" PORK SCRIBE SAW
GUARD & BLADE PART LIST**

<u>REF. NO.</u>	<u>PART NO.</u>	<u>DESCRIPTION</u>	<u>QTY.</u>
1	8888160	GUARD ASSEMBLY COMPLETE	1
1	8888060	GUARD	1
2	8888200	DEPTH GAUGE	1
3	9801426	SCREW	1
4	9801988	FLAT WASHER	1
5	8888210	KNOB	1
6	8888270	SPACER	1
7	6104200	8" 176 TOOTH/8 POINT BLADE	1



DOUBLE GEAR SAW STANDARD PART LISTIN

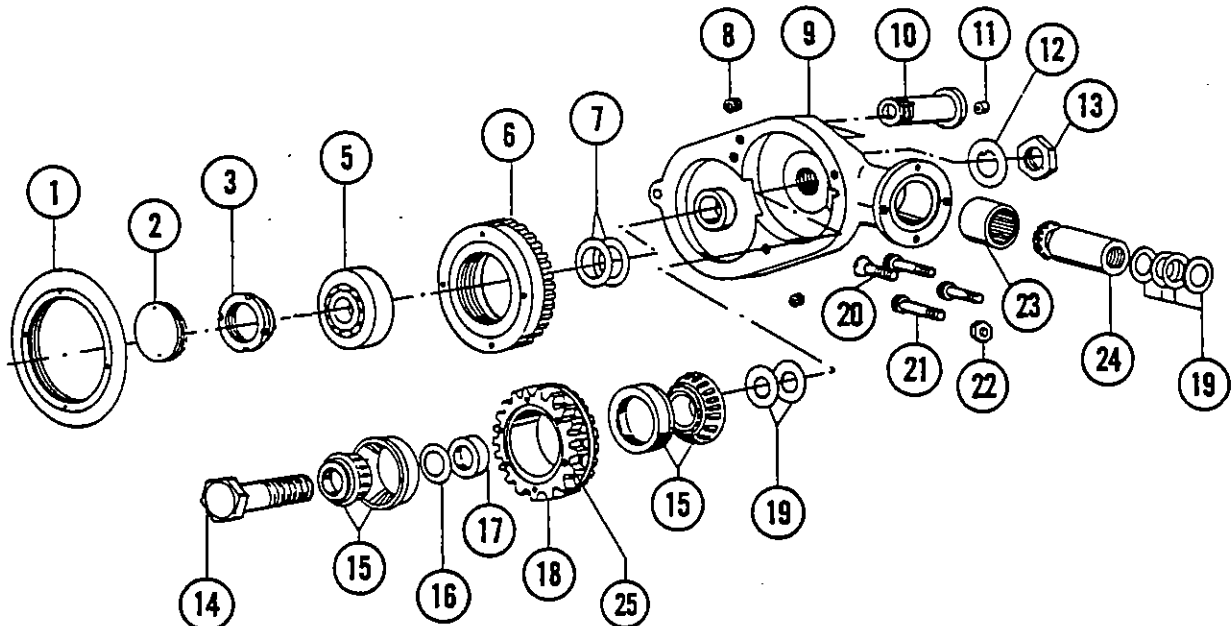
REF. NO.	PART NO.	DESCRIPTION	QTY.
1	8845000	SAW NUT	1
2	8850000	BEARING LOCK NUT	1
3	8862100	LOCK NUT - LEFT HAND THREAD	1
5	8818093	BEARING	1
6	8848059	SAW GEAR ASSEMBLY	1
7	8849500	SHIM	A/R
8	9902462	LOCK NUT	2
9	8853000	STANDARD	1
10	8862000	STUD (SAW GEAR)	1
11	6036093	GREASE FITTING	2
12	8846600	LOCK WASHER	1
13	8847500	LOCK NUT	1
14	8846500	STUD (DOUBLE GEAR)	1
15	8819093	ROLLER BEARING	2
16	8819200	.002 SHIM	A/R
	8819203	.003 SHIM	A/R
	8819205	.005 SHIM	A/R
	8819210	.010 SHIM	A/R
17	8819100	SPACER	1
18	8854059	DOUBLE GEAR ASSEMBLY	1
19	8840110	.003 SHIM	A/R
	8840105	.005 SHIM	A/R
	8840103	.010 SHIM	A/R
20	9800443	FLAT HEAD SCREW (HBBO)	1
21	9901413	SCREW (HBBO)	3
	9801491	SCREW (ATP)	4
22	9801678	NUT (HBBO)	4
23	8837093	NEEDLE BEARING	1
24	8840000	BEVEL PINION - LEFT HAND THREADS	1
25	7230493	SCREW	6

NOT SHOWN

6114050 PIN WRENCH FOR SAW NUT # 1
 8861500 PIN WRENCH FOR BEARING LOCK NUT # 2
 6114450 PIN WRENCH FOR LOCK NUT # 3
 2102900 GREASE GUN
 2108000 GREASE GUN NOZZLE
 8840100 PINION SETTING GAUGE

FRAME ASSEMBLY COMPLETE WITH GUARD

8853350 8" BLADE - COMPLETE FRAME ASSY.
 8853351 10" BLADE COMPLETE FRAME ASSY.
 8853353 12" BLADE COMPLETE FRAME ASSY.
 8856750 HBBO COMPLETE ASSY. - 8" BLADE

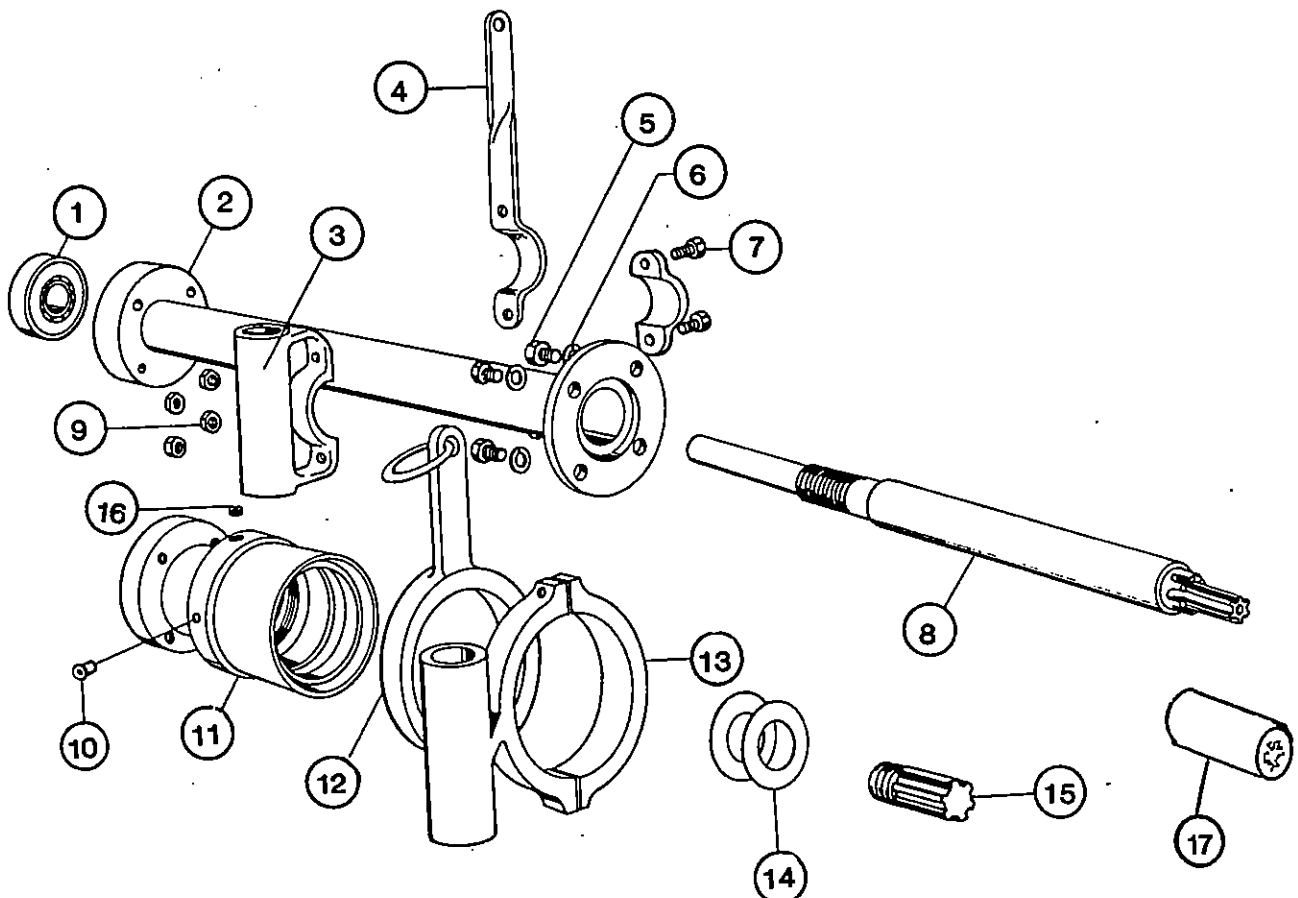


**MODEL "AH" HOG BREASTBONE OPENER (HBBO)
 MODEL "AHS" HOG BREASTBONE OPENER (HBBO)
 MODEL "8", "10" & "12" TRI-PURPOSE HAM MARKER SAW (ATP)
 AIR MODEL "PSA8" PORK SCRIBE SAW (ATP)**

EXTENSION & ADAPTER PARTS LISTING

REF. NO.	PART NO.	DESCRIPTION	QTY.
1	8817093	BEARING (HBBO)	1
2	8880000	9" EXTENSION HOUSING	1
3	8890155	DUAL CONTROL SIDE HANDLE COMPLETE (HBBO)	*
4	8883000	HANGER (HBBO)	1
5	9801409	SCREWS	4
6	9801935	LOCK WASHERS	4
7	9801490	SCREWS	2
8	7205000	9" EXTENSION SHAFT	1
9	9801678	NUT	4
10	6036093	GREASE FITTING	1
11	7200600	ADAPTER	1
12	7200060	HANGER WITH RING (ATP)	1
13	7206155	DUAL CONTROL SIDE HANDLE COMPLETE (ATP)	*
14		SHIMS FOR ALIGNING SAW HEAD	
	7200800	.002 SHIM	A/R
	7200900	.003 SHIM	A/R
	7200801	.005 SHIM	A/R
	7200802	.010 SHIM	A/R
15	7201200	THREADED SPLINE SHAFT (ATP)	1
16	9801883	SET SCREW	1
17	6311400	SHAFT COUPLING - PINION SHAFT TO MOTOR DRIVE	1

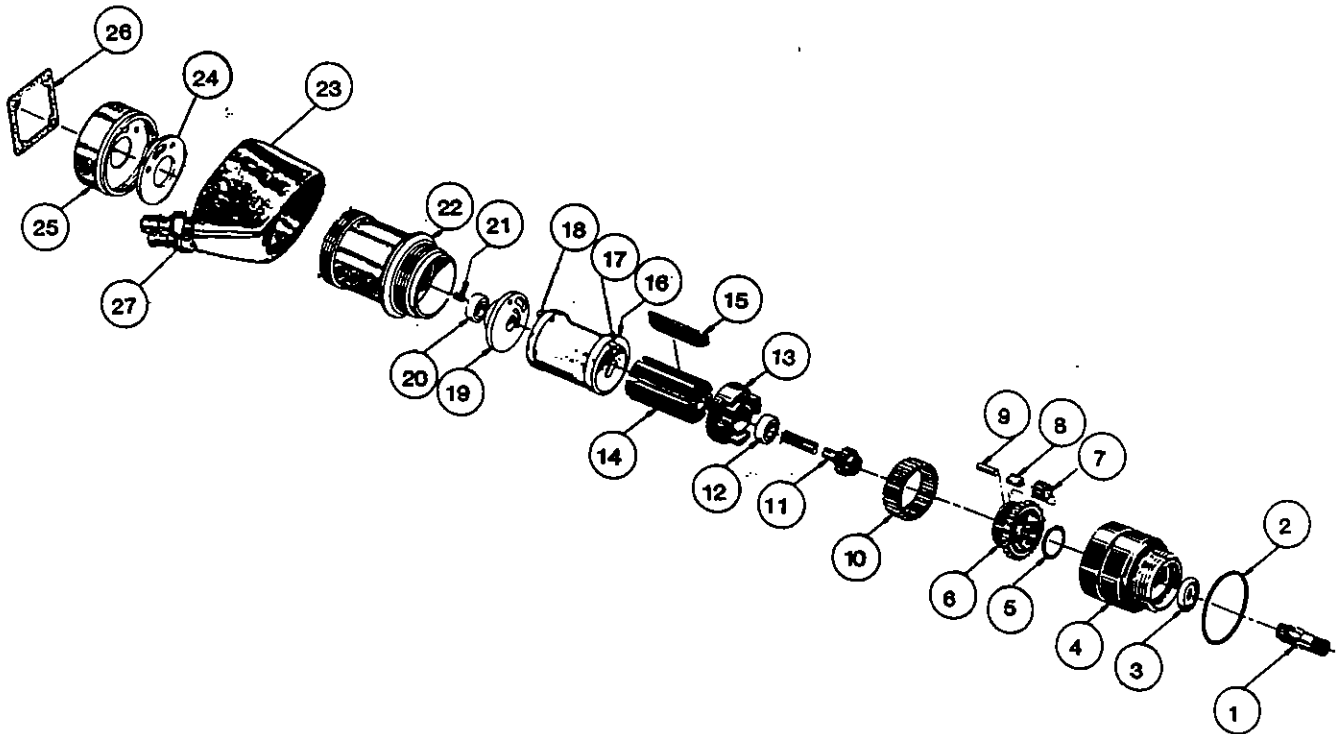
* REFER TO HANDLE PAGE FOR PARTS LISTING



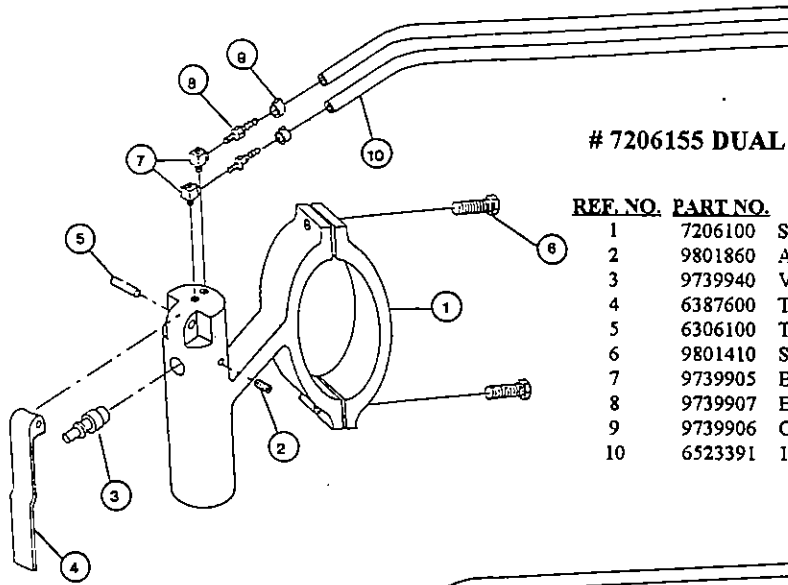
ATP & HBBO AIR MOTOR PARTS LISTING

REF. NO.	PART NO.	DESCRIPTION	QTY.
1	6311300	SPINDLE	1
2	6341300	O-RING	1
3	6311600	BEARING	1
4	6305900	GEAR CASE	1
5	6309000	GREASE SEAL	1
6	6310600	GEAR CASE ASSY.	1
7	6310900	IDLER GEAR	3
8	6307600	IDLER BEARING	3
9	6308600	IDLER PIN	3
10	6308500	RING GEAR	1
11	6308700	LONG SPINDLE GEAR	1
12	6308400	BEARING	1
13	6309300	UPPER END PLATE	1
14	6308900	ROTOR	1
15	6308800	ROTOR BLADES	5
16	6309200	CYLINDER	1
17	6306600	UPPER PIN	1
18	7208052	LOWER PIN	1
19	6307700	LOWER END PLATE	1
20	6308400	BEARING	2
21	9801026	SCREW	1
22	6311100	MOTOR HOUSING ASSY.	1
23	8884000	AIR DEFLECTOR	1
24	6311700	SPACER	1
25	6311900	HEAD	1
26	7208036	ADAPTER GASKET	1
27	8884493	HOSE INSERTS	2
N/S	6337193	MOTOR/REAR HANDLE COMPLETE (LESS #23 & #24)	

NOTE : 45 DEGREE REAR HANDLE ADAPTER # 7205500 AVAILABLE
 ADDITIONAL GASKET FOR ADAPTER TO HANDLE # 6309400

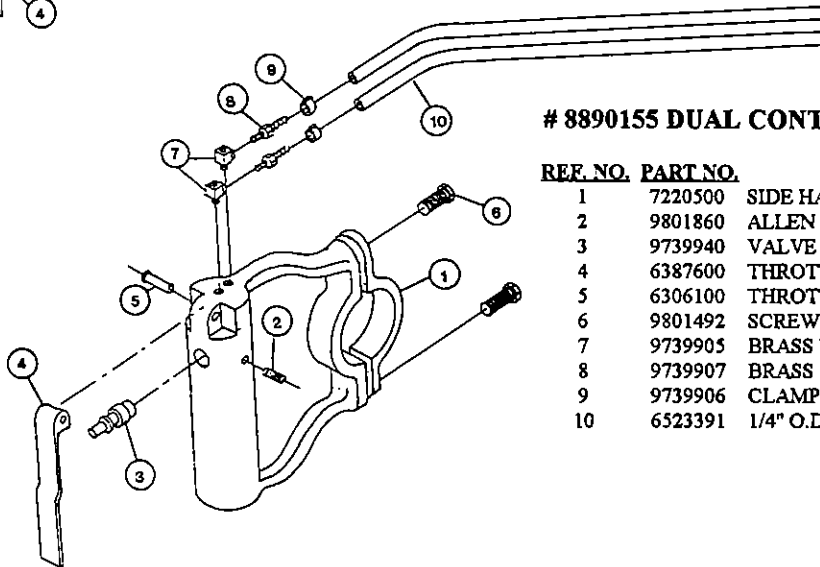


"ATP" & AIR "HBBO" DUAL HANDLE PART LISTING



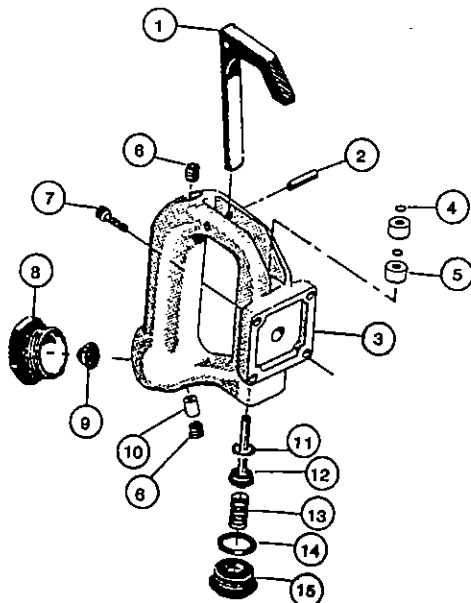
7206155 DUAL CONTROL SIDE HANDLE (ATP)

REF. NO.	PART NO.	DESCRIPTION	QTY.
1	7206100	SIDE HANDLE - DUAL CONTROL	1
2	9801860	ALLEN HEAD SET SCREW	1
3	9739940	VALVE CARTRIDGE	1
4	6387600	THROTTLE LEVER	1
5	6306100	THROTTLE LEVER PIN	1
6	9801410	SCREWS	2
7	9739905	BRASS "L" FITTING	2
8	9739907	BRASS BARBED END FITTING	2
9	9739906	CLAMP	2
10	6523391	1/4" O.D. HOSE	4 FT.



8890155 DUAL CONTROL SIDE HANDLE (HBBO)

REF. NO.	PART NO.	DESCRIPTION	QTY.
1	7220500	SIDE HANDLE - DUAL CONTROL	1
2	9801860	ALLEN HEAD SET SCREW	1
3	9739940	VALVE CARTRIDGE	1
4	6387600	THROTTLE LEVER	1
5	6306100	THROTTLE LEVER PIN	1
6	9801492	SCREWS	2
7	9739905	BRASS "L" FITTING	2
8	9739907	BRASS BARBED END FITTING	2
9	9739906	CLAMP	2
10	6523391	1/4" O.D. HOSE	4 FT.



6337250 REAR AIR HANDLE COMPLETE

REF. NO.	PART NO.	DESCRIPTION	QTY.
1	6387600	LEVER	1
2	6337205	PIN	1
3	6337210	HANDLE	1
4	6337215	"O" RING	2
5	6337220	BUSHING	2
6	6337225	PLUG	1
7	6337230	SCREW	4
8	6337235	INLET ADAPTER	1
9	6337240	SCREEN	1
10	6337245	BUSHING & FILTER	1
11	6337255	SEAL	1
12	6337260	THROTTLE VALVE	1
13	6306800	SPRING	1
14	6337270	BACK UP RING	1
15	6337275	CAP	1