



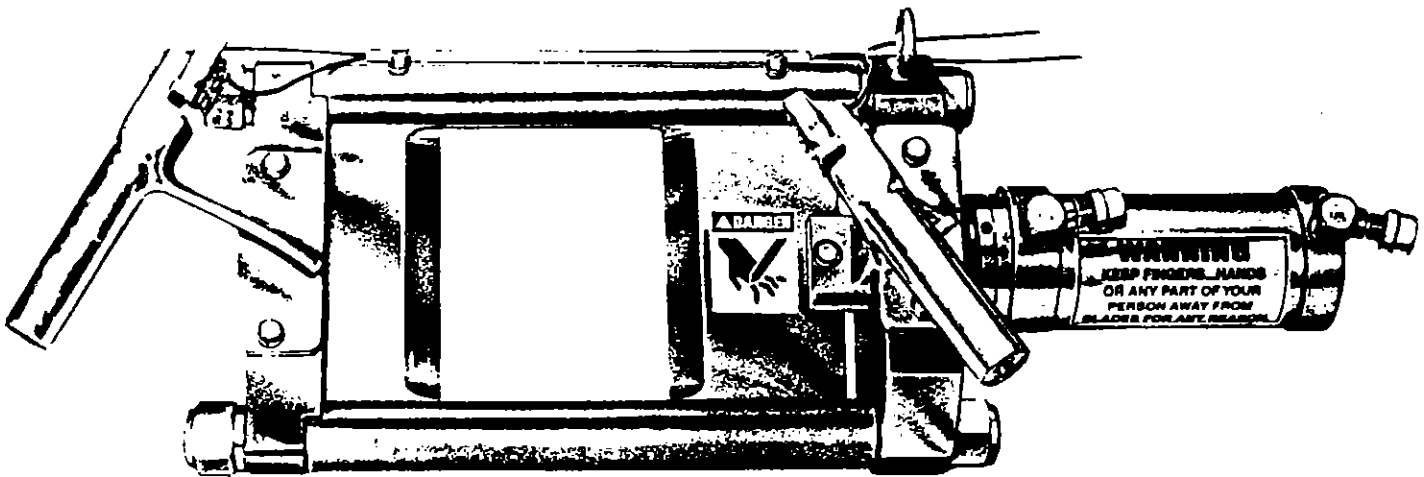
Model "350"

HORN-MASTER

Heavy-Duty High Performance

CATTLE DEHORNER

PARTS & SERVICE MANUAL



USDA
APPROVED

BEST & DONOVAN

5570 CREEK RD., CINCINNATI, OH 45242, USA

TOLL FREE: 1-800-553-2378
TELEPHONE: (513) 791-9180
CABLE: WEPCO
FAX: 513-791-0925

OPERATOR PRECAUTIONS

1

Be alert at all times. Think safety.

2

Respect your equipment and know how to properly operate it.

3

Do not attempt to operate the Dehorner until you have read and understand the instructions herein.

4

Do not try to defeat the equipment's dual control feature by taping one button closed as it is designed for your protection.

5

Be smart and wear safety glasses. But don't wear watches, bracelets, rings or necklaces. Also don't wear loose fitting clothing or neckties.

6

Also wear proper footwear to eliminate the possibility of slipping.

7

Don't fool around, ANY POWER TOOL can cause death or injury.

8

Never place fingers, hands or any part of your person between blades of Dehorner.

9

If a blade jams, notify supervisor or maintenance department.

B&D Model "350" Horn-Master
NOTICE TO EMPLOYER AND SAFETY DIRECTOR

READ TO AVOID INJURY



1. **Remove and repair** any tool which malfunctions. All personnel must be instructed to remove any malfunctioning tool from the work area for immediate repair.
2. **Ensure** that all employees who use this tool are trained in the proper use of this tool and are aware of the dangers that may arise if they do not follow the procedure outlined in this brochure.
3. **Enclosed** are four (4) copies of "NOTICE TO OPERATORS, MAINTENANCE, AND CLEANUP PERSONNEL." Post one copy on the employees' bulletin board; give one copy to the operator(s); give one copy to the maintenance foreman; and give one copy to the sub-contractor cleanup/internal cleanup foreman.
Additional copies will be provided upon request.
4. The tool is designed and intended to be powerful. This fact must be expressed to your employees, but you must emphasize this fact to them.
5. **NEVER MAKE MODIFICATIONS OR ALTERATIONS TO THIS TOOL.**
6. **Replace any lost or illegible labels.**
7. **Ensure** that proper procedures are established (in accordance with OSHA's lockout/tagout procedures 29 CFR 1910.147) to prevent accidental startup.
8. **Follow** our installation and maintenance instructions for proper installation and care of the tool.
9. **AVOID INJURY. DO NOT LET THIS TOOL BE MISUSED.**
10. **If you resell or distribute** a B & D product, you must provide the purchaser with the appropriate safety sheets and the tool brochure.

BEST & DONOVAN
5570 CREEK ROAD CINCINNATI, OHIO 45242
UNITED STATES OF AMERICA

Toll Free : 1-800-553-BEST Fax : 1-513-791-0925 Tel : 1-513-791-9180

B&D Model "350" Horn-Master

NOTICE TO OPERATORS, MAINTENANCE, AND CLEANUP PERSONNEL

*REMOVE ANY MALFUNCTIONING TOOL FROM SERVICE
REPORT ANY PROBLEMS TO YOUR SUPERVISOR*



1. **Disconnect** the power supply in accordance with OSHA's lockout/tagout procedures (29 CFR 1910.147) before making any blade changes.
2. **Disconnect** the power supply in accordance with OSHA's lockout/tagout procedures (29 CFR 1910.147) before performing any repairs or maintenance.
3. **Disconnect** the power supply (or have the power supply disconnected) in accordance with OSHA's lockout/tagout procedures (29 CFR 1910.147) before performing any cleanup on the tool.
4. **DISCONNECT THE POWER SUPPLY WHEN THE TOOL IS NOT IN USE.**
5. **Never** put fingers, hands, or other parts of the body on the cutting edge or within the cutting path of the tool when it is connected to the power supply.
6. **Depressing both** trigger switches simultaneously activates the tool; **releasing either** trigger switch will deactivate the tool.
7. **Never** depress the trigger switches unless you want to use the tool.
8. **NEVER MAKE MODIFICATIONS OR ALTERATIONS TO THIS TOOL.**
9. *Replace any lost or illegible labels.*

BEST & DONOVAN

5570 CREEK ROAD CINCINNATI, OHIO 45242

UNITED STATES OF AMERICA

Toll Free : 1-800-553-BEST Fax : 1-513-791-0925 Tel : 1-513-791-9180

WARRANTY

MODEL "350" HORN-MASTER

Best & Donovan warrants the machine against defective workmanship and material for ninety (90) days from date of factory shipment. In the fulfillment of its warranty, the sole obligation of B&D shall be to repair or replace, at its option F.O.B. its factory, any part or parts which are returned F.O.B. its factory, shipping charges prepaid, and which after inspection by Seller are found to be defective. Buyer shall notify Seller of defect in writing, promptly upon discovery, within the warranted period. This warranty does not cover defects caused by corrosion or normal deterioration. It does not extend to consequential damage, loss or delay associated with a warranty defect and it does not cover any cost of labor, travel or other expenses associated with the repair or replacement of defective parts. Seller assumes no liability for product loss or other claims whatsoever arising out of the use or application of the machine in meat slaughtering operations, whether the machine is used alone or in conjoint use with other meat slaughtering machines or processes. This warranty is "voided" if repairs, replacements or alterations are made by others without prior authorization by Seller. Notwithstanding the foregoing, Seller's warranty obligations with respect to any items not manufactured by Seller shall not exceed the obligations undertaken by the manufacturer thereof under express warranty to the Seller. This express warranty is in lieu of all other warranties of fitness of the machine for any particular purpose.

OPERATING & SERVICING INSTRUCTIONS

MODEL "350" HORN-MASTER

Maintenance Instructions

- HYDRAULIC PUMP SPECIFICATIONS: ELECTRIC OVER OIL HYDRAULIC PUMP.
- 5-GPM [GALLONS PER MINUTE].
- 3,000 PSI [PRESSURE PER SQUARE INCH] "MAXIMUM".
- 20 GALLON RESERVOIR.
- 7-1/2 [5.588kw] HORSEPOWER TOTALLY-ENCLOSED WATERPROOF MOTOR. ANY VOLTAGES REQUIRED, 3 PHASE ONLY, 50 OR 60 CYCLES.

Installation

HYDRAULIC UNIT SHOULD BE INSTALLED ABOVE WORKING LEVEL OF HAND TOOL.

MAKE SURE ELECTRIC MOTOR TURNS IN DIRECTION INDICATED BY ARROW.

CONNECT AIR SUPPLY TO AIR FILTER PROVIDED ON SET, DO NOT USE LUBRICATOR.

Hand Piece

SUSPEND MODEL "350" FROM A #6343100 OVERHEAD SPIRAL SPRING COUNTERBALANCER. [Refer to Installation Drawing] CONNECT HYDRAULIC HOSES AND READJUST BALANCER IF NECESSARY.

CONNECT AIR TO HAND PIECE.

START POWER UNIT FROM SWITCH CLOSE TO OPERATOR.

TURN POWER OFF DURING BREAKS AND AT END OF WORK SHIFT.

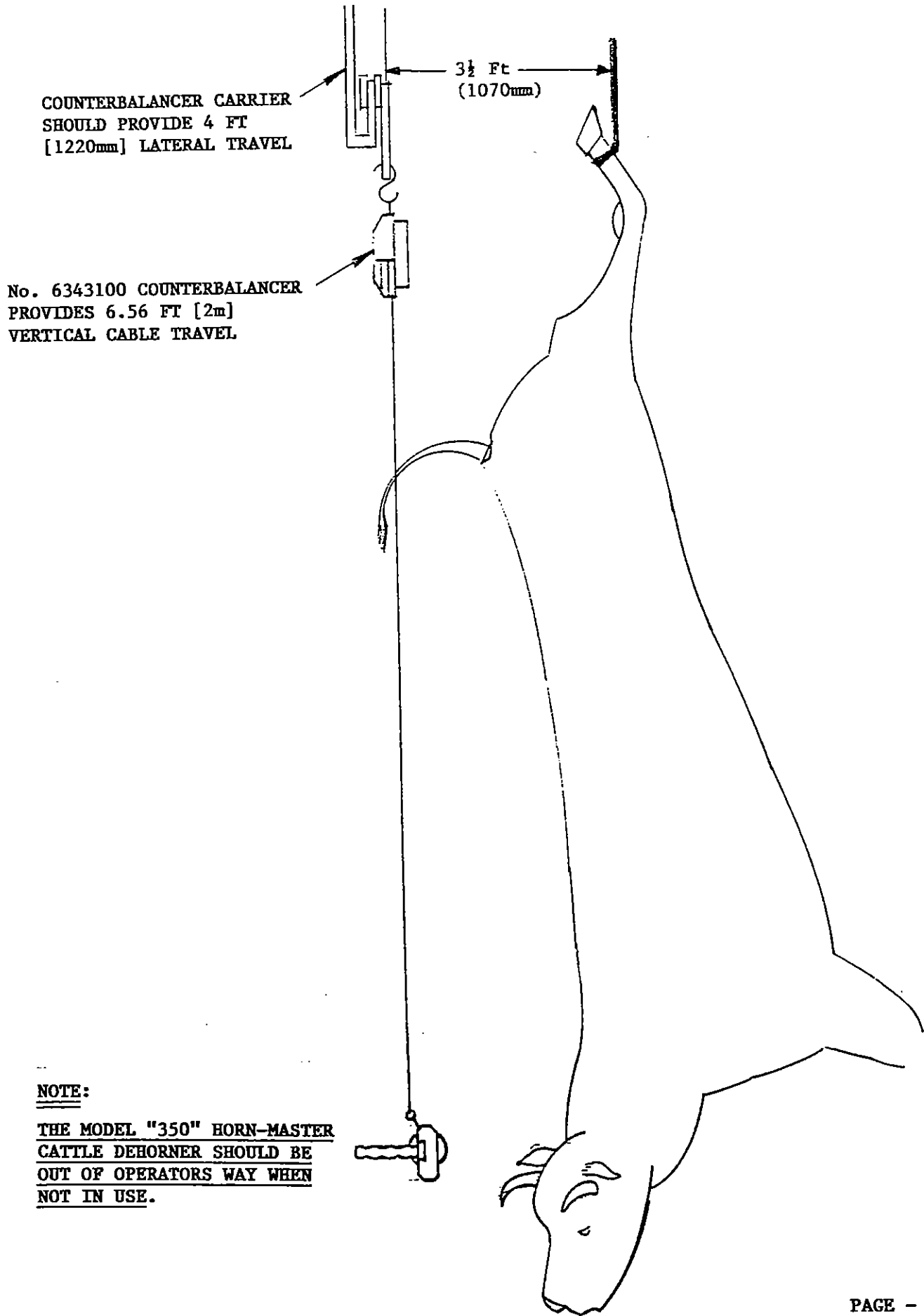
Routine Call & Maintenance

WASH HAND PIECE THOROUGHLY AFTER WORK SHIFT AND APPLY NON-TOXIC OIL TO MOVING PARTS.

KEEP BLADES SHARP AT ALL TIMES [MOST IMPORTANT]

SPEND SOME TIME ONCE WEEKLY TO ASSURE TOOL IS IN SAFE AND GOOD WORKING CONDITION.

INSTALLATION DRAWING



WARNING

ALWAYS DISCONNECT MACHINE
FROM POWER SOURCE & TURN-OFF
HYDRAULIC PUMP BEFORE ATTEMPTING
TO PERFORM ANY REPAIRS, MAKE
ANY ADJUSTMENTS OR TOUCH-UP OR
SHARPEN CUTTER BLADES.

BLADE ADJUSTMENT

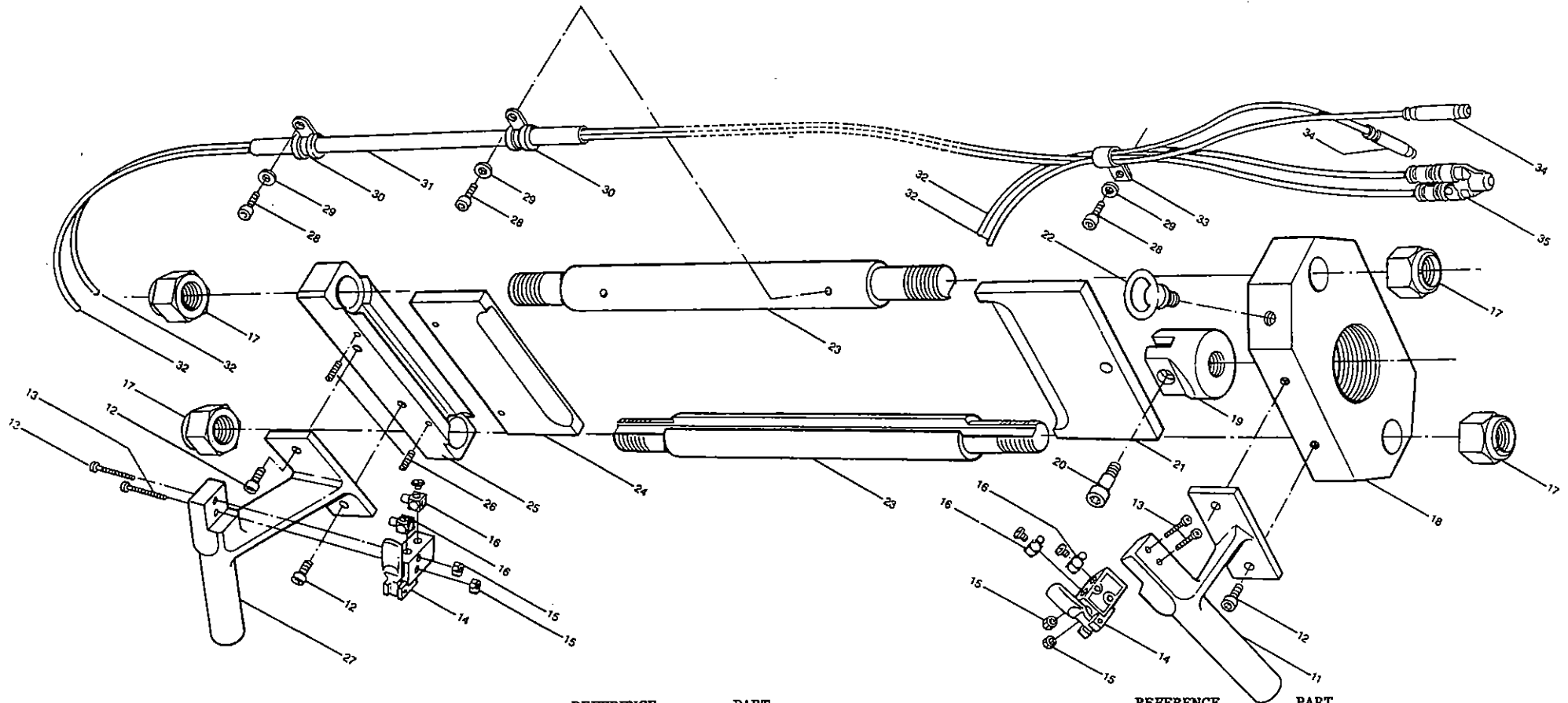
UPON ARRIVAL OF THE B&D MODEL "350" HORN-MASTER CATTLE DEHORNER YOU WILL NOTICE THAT THE BLADE SETTING IS APPROXIMATELY 1 MM FROM CLOSING COMPLETELY. THIS IS DONE TO SAFEGUARD BLADE EDGES AND MORE SO AS MANY SLAUGHTERHOUSES REQUIRE THE HORN TO REMAIN ATTACHED TO THE HEAD BY A PIECE OF SKIN, TO BE FINALLY REMOVED WITH A KNIFE OVER A CHUTE OR SUITABLE PLACE AWAY FROM THE STIKCING & DEHORNING AREA.

IF YOUR REQUIREMENTS DIFFER FROM THIS METHOD & HORNS HAVE TO COME OFF BY THE MODEL "350" CUTTER, THEN THE BLADE OPENING CAN BE ADJUSTED BY LOOSENING PART No. 7 [BLADE ADJUSTING NUT] & SCREWING THE CYLINDER COMPLETE 1/2 OR FULL TURN INTO PART No. 18 [HEAD CYLINDER MOUNT] UNTIL BLADES ARE JUST TOUCHING. ONCE THIS IS ACHIEVED, RE-LOCK PART 7 TO ENSURE CORRECT CLEARANCE WILL BE MAINTAINED.

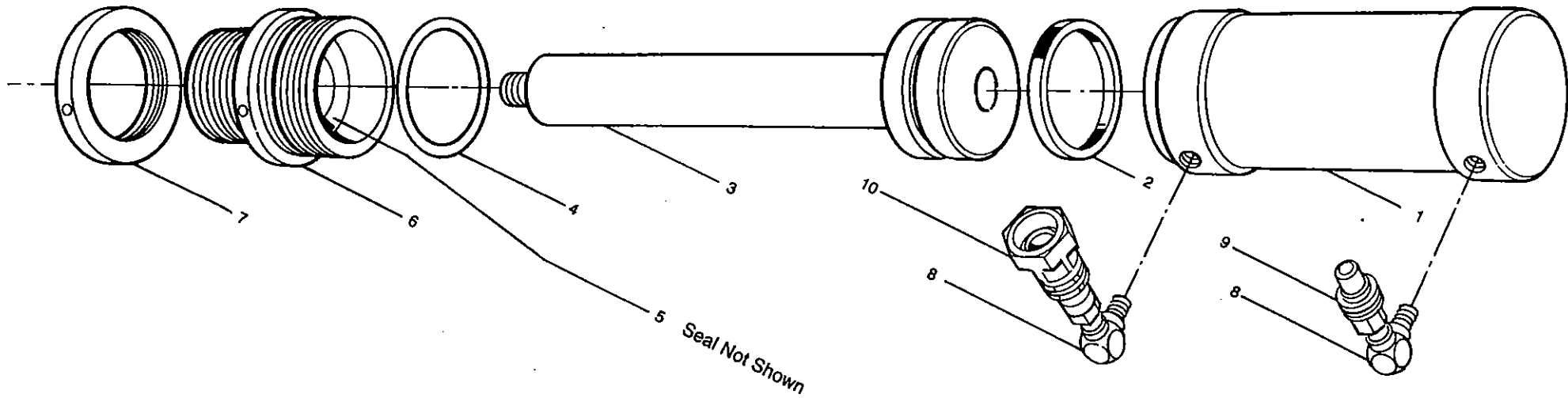
IF BLADE OPENING NEEDS TO BE INCREASED, RETRACT BLADE POSITION TO "OPEN", REMOVE YOKE SCREW (20) FROM YOKE (19), PUSH BLADE OUT OF YOKE SLOT, THEN TURN CYLINDER COUNTERCLOCKWISE TO DESIRED OPENING, AFTER WHICH THE BLADE CAN BE RETURNED INTO YOKE SLOT & CYLINDER SECURED BUT NUT (7). THE REASON FOR THIS BLADE BEING REMOVED FROM THE YOKE IS DUE TO THE FACT THAT THERE IS A POSSIBILITY THAT BY UNSCREWING THE CYLINDER YOU MAY ALSO UNSCREW THE YOKE FROM THE PISTON ROD. YOKE IS "LOCTITED" ON PISTON ROD SO IT SHOULD NOT HAPPEN, HOWEVER, IT IS BETTER TO BE SAFE THAN SORRY.

SHARPENING BLADES

TO SHARPEN BLADES — REMOVE PART 25 [HEAD FIXED END] & WITHDRAW BLADES, LEAVING BOTH BLADE GUIDES SECURED ON PART 18 [HEAD CYLINDER MOUNT]. IT IS MOST IMPORTANT THAT BOTH BLADES ARE RE-GROUND AS PER ORIGINAL ANGLE & THAT AFTER GRINDING BOTH BLADE EDGES MEET SQUARE-ON, OTHERWISE PROPER BLADE ADJUSTMENT BECOMES IMPOSSIBLE.



REFERENCE NUMBER	PART NUMBER	DESCRIPTION	REFERENCE NUMBER	PART NUMBER	DESCRIPTION	REFERENCE NUMBER	PART NUMBER	DESCRIPTION
11	9765029	Handle - Right	20	9765051	Yoke Screw S/S	29	9765073	Hose Clip Screw Washer
12	9765031	Handle Screw S/S	21	9765053	Moveable Blade	30	9765075	Hose Clip
13	9765033	Trigger Screw S/S	22	9765057	Hanger Ring	31	9765077	Tube Guard
14	9765036	Valve Assembly	23	9765059	Blade Guide [Top or Bottom]	32	9765079	Hose 4mm O.D.
15	9765039	Valve Screw Nut	24	9765061	Fixed Blade	33	9765081	Hose Clip
16	9765041	Elbow - Valve Assy	25	9765063	Head - Fixed End	34	9765083	Straight Connector 4mm
17	9765043	Nut - Blade Guide	26	9765066	Roll Pin	35	9765085	Tube Connector
18	9765046	Head	27	9765069	Handle - Left			
19	9765049	Yoke S/S	28	9765071	Hose Clip Screw			



<u>REFERENCE NUMBER</u>	<u>PART NUMBER</u>	<u>DESCRIPTION</u>
* 1	9765003	Cylinder Body
* 2	9765006	Piston Seal
* 3	9765008	Piston & Rod Assembly
* 4	9765011	O - Ring
* 5	9765013	Rod Seal & Wiper [not illustrated]
* 6	9765016	Cylinder Head
* 7	9765019	Blade Adjusting Nut
8	9765021	Male Elbow
9	9765023	Coupling - Male
10	9765025	Coupling - Female
* 36	9765088	Cylinder Assembly Complete Includes Ref. No.'s 1 thru 7